

Interferon alpha 2 (IFN- α 2) Rabbit pAb

货号: **AYP20473**

产品信息

反应	Human,Mouse
宿主	Rabbit
克隆性	Polyclonal
预测反应	
应用	WB
推荐浓度	WB: 1:500 - 1:2000
理论分子量	21kDa
实测分子量	15kDa
形式	Liquid
保存条件	Store at -20°C. Avoid freeze / thaw cycles. Buffer: PBS with 0.01% thiomersal,50% glycerol,pH7.3.
偶联物	Unconjugated
阳性对照	U-937,SP2/0
细胞定位	extracellular region,extracellular space
纯化	Affinity purification

抗原信息

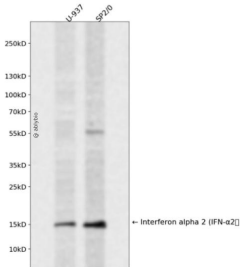
抗原信息	A synthetic peptide corresponding to a sequence within amino acids 100 to the C-terminus of human Interferon alpha 2 (IFN- α 2) (NP_000596.2).
序列	DETLDDKFYTELYQQLNDLEACVIQGVGVTTETPLMKEDSILAVRKYFQRITLYLKEKKYSPCAWEVVRAEIMRSFSLSTNLQE SLRSKE

靶点信息

研究背景	This gene is a member of the alpha interferon gene cluster on chromosome 9. The encoded protein is a cytokine produced in response to viral infection. Use of the recombinant form of this protein has been shown to be effective in reducing the symptoms and duration of the common cold.
基因ID	3440

基因名	IFNA2
Swiss	P01563
别名	IFNA2;IFN-alphaA;IFNA;IFNA2B;INFA2

产品验证



Western blot analysis of Interferon alpha 2 (IFN-α2) expressed in U-937, SP2/0 using Interferon alpha 2 (IFN-α2) Rabbit pAb at 1:1000. Secondary antibody: HRP Goat Anti-Rabbit IgG (H+L) at 1:5000. Lysates/proteins: 30ug per lane. Blocking buffer: 5% non-fat dry milk in TBST. Detection: ECL Enhanced Kit. Exposure time: 120s.

实验步骤

访问官网浏览详情: www.ablybio.cn