

AP1B1 Rabbit pAb

货号: **AYP20447**

产品信息

| | |
|-------|--|
| 反应 | Human,Mouse,Rat |
| 宿主 | Rabbit |
| 克隆性 | Polyclonal |
| 预测反应 | |
| 应用 | WB |
| 推荐浓度 | WB: 1:500 - 1:2000 |
| 理论分子量 | 101kDa/103kDa/104kDa |
| 实测分子量 | 105kDa |
| 形式 | Liquid |
| 保存条件 | Store at -20°C. Avoid freeze / thaw cycles. Buffer: PBS with 0.01% thiomersal,50% glycerol,pH7.3. |
| 偶联物 | Unconjugated |
| 阳性对照 | 293T,C6,Mouse liver |
| 细胞定位 | cytosol,early endosome,Golgi apparatus |
| 纯化 | Affinity purification |

抗原信息

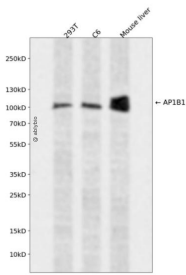
| | |
|------|--|
| 抗原信息 | A synthetic peptide corresponding to a sequence within amino acids 700-800 of human AP1B1 (NP_001118.3). |
| 序列 | SDLFDLTSGVGTLSGSYVAPKAVWLPAMKAKGLEISGTFTRQVGSISMDLQLTNKALQVMTDFAIQFNRRNSFGLAPAAPLQVHAPLSPNQTV EISLPLSTV |

靶点信息

| | |
|------|---|
| 研究背景 | Adaptor protein complex 1 is found at the cytoplasmic face of coated vesicles located at the Golgi complex, where it mediates both the recruitment of clathrin to the membrane and the recognition of sorting signals within the cytosolic tails of transmembrane receptors. This complex is a heterotetramer composed of two large, one medium, and one small adaptin subunit. The protein encoded by this gene serves as one of the large subunits of this complex and is a member of the adaptin protein family. This gene is a candidate meningioma gene. Alternative splicing results in multiple transcript variants. |
|------|---|

| | |
|-------|---------------------------------|
| 基因ID | 162 |
| 基因名 | AP1B1 |
| Swiss | Q10567 |
| 别名 | AP1B1;ADTB1;AP105A;BAM22;CLAPB2 |

产品验证



Western blot analysis of AP1B1 expressed in 293T, C6, Mouse liver using AP1B1 Rabbit pAb at 1:1000. Secondary antibody: HRP Goat Anti-Rabbit IgG (H+L) at 1:5000. Lysates/proteins: 30ug per lane. Blocking buffer: 5% non-fat dry milk in TBST. Detection: ECL Enhanced Kit. Exposure time: 120s.

实验步骤

访问官网浏览详情: www.ablybio.cn