

NAV2 Rabbit pAb

货号: **AYP20444**

产品信息

反应	Human
宿主	Rabbit
克隆性	Polyclonal
预测反应	
应用	WB IHC IF/ICC
推荐浓度	WB: 1:500 - 1:2000 IHC: 1:50 - 1:100 IF/ICC: 1:50 - 1:100
理论分子量	268kDa
实测分子量	100kDa
形式	Liquid
保存条件	Store at -20°C. Avoid freeze / thaw cycles. Buffer: PBS with 0.01% thiomersal, 50% glycerol, pH7.3.
偶联物	Unconjugated
阳性对照	HepG2, MCF-7, A-431
细胞定位	nucleoplasm
纯化	Affinity purification

抗原信息

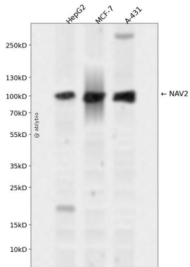
抗原信息	Recombinant fusion protein containing a sequence corresponding to amino acids 1800-1980 of human NAV2 (NP_660093.2).
序列	EEMTDSSLPSSPKLPHNGSTGSTPLLRNSHSNSLISECMDSEAEVTVMLRNELRDKEMKLTDIRLEALSSAHQLDQLREAM NRMQSEIEKLAENDRLKSESQSGGCSRAPSQVSISASPRQSMGLSQHSLNLTESTSLDMLLDDTGEC SARKEGGRHVKI VVSFQEEMKWKEDSRPHLFL

靶点信息

研究背景	This gene encodes a member of the neuron navigator gene family, which may play a role in cellular growth and migration. Multiple transcript variants encoding different isoforms have been found for this gene.
基因ID	89797

基因名	NAV2
Swiss	Q8IVL1
别名	NAV2;HELAD1;POMFIL2;RAINB1;STEERIN2;UNC53H2

产品验证



Western blot analysis of NAV2 expressed in HepG2, MCF-7, A-431 using NAV2 Rabbit pAb at 1:1000. Secondary antibody: HRP Goat Anti-Rabbit IgG (H+L) at 1:5000. Lysates/proteins: 30ug per lane. Blocking buffer: 5% non-fat dry milk in TBST. Detection: ECL Enhanced Kit. Exposure time: 120s.

实验步骤

访问官网浏览详情: www.ablybio.cn