

# WT1 Rabbit pAb

货号: **AYP20442**

## 产品信息

反应	Human,Mouse,Rat
宿主	Rabbit
克隆性	Polyclonal
预测反应	
应用	WB IF/ICC
推荐浓度	<b>WB:</b> 1:500 - 1:2000 <b>IF/ICC:</b> 1:50 - 1:200
理论分子量	33kDa/34kDa/47kDa/48kDa/49kDa/55kDa/56kDa
实测分子量	49-60kDa
形式	Liquid
保存条件	Store at -20°C. Avoid freeze / thaw cycles. Buffer: PBS with 0.01% thiomersal,50% glycerol,pH7.3.
偶联物	Unconjugated
阳性对照	Mouse uterus,Rat kidney,Rat testis
细胞定位	Cytoplasm,Nucleus,Nucleus speckle,nucleolus,nucleoplasm
纯化	Affinity purification

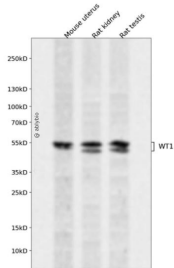
## 抗原信息

抗原信息	Recombinant fusion protein containing a sequence corresponding to amino acids 1-302 of human WT1 (P 19544).
序列	MGSDVRDLNALLPAVPSLGGGGGALPVSQAAQWAPVLDFAFPGASAYGSLGGPAPPAPPPPPPPHFSFIKQEPSWG GAEPHEEQCLSAFTVHFSGQFTGTAGACRYGPFQPPPSQASSGQARMFPNAPYLPSCLESQPAIRNQGYSTVTFDGTPS YGHTPSHHAAQFPNHSFKHEDPMGQQGSLGEQQYSVPPVYGCHTPTDSTGSQALLLRTPYSSDNLYQMTSQLECM TWNQMNLGATLKGVAAGSSSSVKWTEGQSNHSTGYESDNHTTPILCGAQYRIHTHGVRGIQDVR

## 靶点信息

研究背景	This gene encodes a transcription factor that contains four zinc-finger motifs at the C-terminus and a proline/glutamine-rich DNA-binding domain at the N-terminus. It has an essential role in the normal development of the urogenital system, and it is mutated in a small subset of patients with Wilms tumor. This gene exhibits complex tissue-specific and polymorphic imprinting pattern, with biallelic, and monoallelic expression from the maternal and paternal alleles in different tissues. Multiple transcript variants have been described. In several variants, there is evidence for the use of a non-AUG (CUG) translation initiation codon upstream of, and in-frame with the first AUG. Authors of PMID:7926762 also provide evidence that WT1 mRNA undergoes RNA editing in human and rat, and that this process is tissue-restricted and developmentally regulated.
基因ID	7490
基因名	WT1
Swiss	P19544
别名	WT1;AWT1;EWS-WT1;GUD;NPHS4;WAGR;WIT-2;WT33

## 产品验证



Western blot analysis of WT1 expressed in Mouse uterus, Rat kidney, Rat testis using WT1 Rabbit pAb at 1:1000. Secondary antibody: HRP Goat Anti-Rabbit IgG (H+L) at 1:5000. Lysates/proteins: 30ug per lane. Blocking buffer: 5% non-fat dry milk in TBST. Detection: ECL Enhanced Kit. Exposure time: 120s.

## 实验步骤

访问官网浏览详情: [www.ablybio.cn](http://www.ablybio.cn)