

# Phospho-PLCB3-S1105 Rabbit pAb

货号: **AYP20413**

## 产品信息

反应	Human,Mouse,Rat
宿主	Rabbit
克隆性	Polyclonal
预测反应	
应用	<a href="#">WB</a>
推荐浓度	<b>WB:</b> 1:500 - 1:2000
理论分子量	131kDa/138kDa
实测分子量	150kDa
形式	Liquid
保存条件	Store at -20°C. Avoid freeze / thaw cycles. Buffer: PBS with 0.01% thiomersal,50% glycerol,pH7.3.
偶联物	Unconjugated
阳性对照	HeLa
细胞定位	Membrane,Peripheral membrane protein
纯化	Affinity purification

## 抗原信息

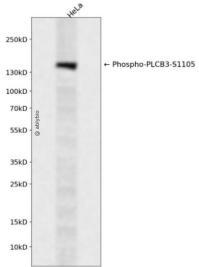
抗原信息	A synthetic phosphorylated peptide around S1105 of human PLCB3 (NP_000923.1).
序列	HNSIS

## 靶点信息

研究背景	This gene encodes a member of the phosphoinositide phospholipase C beta enzyme family that catalyze the production of the secondary messengers diacylglycerol and inositol 1,4,5-triphosphate from phosphatidylinositol in G-protein-linked receptor-mediated signal transduction. Alternative splicing results in multiple transcript variants.
基因ID	5331
基因名	PLCB3

Swiss	Q01970
别名	PLCB3

## 产品验证



Western blot analysis of Phospho-PLCB3-S1105 expressed in HeLa using Phospho-PLCB3-S1105 Rabbit pAb at 1:1000. Secondary antibody: HRP Goat Anti-Rabbit IgG (H+L) at 1:5000. Lysates/proteins: 30ug per lane. Blocking buffer: 5% non-fat dry milk in TBST. Detection: ECL Enhanced Kit. Exposure time: 1 20s.

## 实验步骤

访问官网浏览详情: [www.ablybio.cn](http://www.ablybio.cn)