

Phospho-NPM1-T199 Rabbit pAb

货号: **AYP20412**

产品信息

反应	Human,Rat
宿主	Rabbit
克隆性	Polyclonal
预测反应	
应用	WB
推荐浓度	WB: 1:500 - 1:2000
理论分子量	28kDa/29kDa/32kDa
实测分子量	38kDa
形式	Liquid
保存条件	Store at -20°C. Avoid freeze / thaw cycles. Buffer: PBS with 0.01% thiomersal,50% glycerol,pH7.3.
偶联物	Unconjugated
阳性对照	HeLa,PC-12
细胞定位	Cytoplasm,Nucleus,centrosome,cytoskeleton,microtubule organizing center,nucleolus,nucleoplasm
纯化	Affinity purification

抗原信息

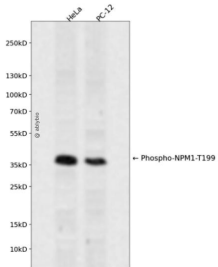
抗原信息	A synthetic phosphorylated peptide around T199 of human NPM1 (NP_001032827.1).
序列	RDTPA

靶点信息

研究背景	This gene encodes a phosphoprotein which moves between the nucleus and the cytoplasm. The gene product is thought to be involved in several processes including regulation of the ARF/p53 pathway. A number of genes are fusion partners have been characterized, in particular the anaplastic lymphoma kinase gene on chromosome 2. Mutations in this gene are associated with acute myeloid leukemia. More than a dozen pseudogenes of this gene have been identified. Alternative splicing results in multiple transcript variants.
基因ID	4869

基因名	NPM1
Swiss	P06748
别名	B23;NPM;NPM1

产品验证



Western blot analysis of Phospho-NPM1-T199 expressed in HeLa,PC-12 using Phospho-NPM1-T199 R abbit pAb at 1:1000. Secondary antibody: HRP Goat Anti-Rabbit IgG (H+L) at 1:5000. Lysates/proteins: 30ug per lane. Blocking buffer: 5% non-fat dry milk in TBST. Detection: ECL Enhanced Kit. Exposure time: 120s.

实验步骤

访问官网浏览详情: www.ablybio.cn