

# Phospho-eEF2-T56 Rabbit pAb

货号: **AYP20410**

## 产品信息

反应	Human,Mouse,Rat
宿主	Rabbit
克隆性	Polyclonal
预测反应	
应用	WB
推荐浓度	<b>WB:</b> 1:500 - 1:2000
理论分子量	95kDa
实测分子量	105kDa
形式	Liquid
保存条件	Store at -20°C. Avoid freeze / thaw cycles. Buffer: PBS with 0.01% thiomersal,50% glycerol,pH7.3.
偶联物	Unconjugated
阳性对照	NIH/3T3,C6
细胞定位	Cytoplasm,Nucleus
纯化	Affinity purification

## 抗原信息

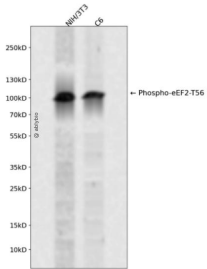
抗原信息	A synthetic phosphorylated peptide around T56 of human Phospho-eEF2-T56 (NP_001952.1).
序列	TRFTD

## 靶点信息

研究背景	This gene encodes a member of the GTP-binding translation elongation factor family. This protein is an essential factor for protein synthesis. It promotes the GTP-dependent translocation of the nascent protein c hain from the A-site to the P-site of the ribosome. This protein is completely inactivated by EF-2 kinase phosphorylation.
基因ID	1938
基因名	EEF2

Swiss	P13639
别名	EEF2;EEF-2;EF-2;EF2;SCA26

## 产品验证



Western blot analysis of Phospho-eEF2-T56 expressed in NIH/3T3,C6 using Phospho-eEF2-T56 Rabbit pAb at 1:1000. Secondary antibody: HRP Goat Anti-Rabbit IgG (H+L) at 1:5000. Lysates/proteins: 30u g per lane. Blocking buffer: 5% non-fat dry milk in TBST. Detection: ECL Enhanced Kit. Exposure time: 120s.

## 实验步骤

访问官网浏览详情: [www.ablybio.cn](http://www.ablybio.cn)