

Phospho-GRIN1-S890 Rabbit pAb

货号: **AYP20406**

产品信息

反应	Human,Rat
宿主	Rabbit
克隆性	Polyclonal
预测反应	
应用	WB
推荐浓度	WB: 1:500 - 1:2000
理论分子量	99kDa/101kDa/103kDa/105kDa/106kDa/107kDa
实测分子量	140kDa
形式	Liquid
保存条件	Store at -20°C. Avoid freeze / thaw cycles. Buffer: PBS with 0.01% thiomersal,50% glycerol,pH7.3.
偶联物	Unconjugated
阳性对照	C6
细胞定位	Cell junction,Cell membrane,Multi-pass membrane protein,postsynaptic cell membrane,postsynaptic density,synapse
纯化	Affinity purification

抗原信息

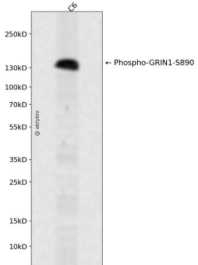
抗原信息	A synthetic phosphorylated peptide around S890 of human NMDAR1 (NP_015566.1).
序列	ASSFK

靶点信息

研究背景	The protein encoded by this gene is a critical subunit of N-methyl-D-aspartate receptors, members of the glutamate receptor channel superfamily which are heteromeric protein complexes with multiple subunits arranged to form a ligand-gated ion channel. These subunits play a key role in the plasticity of synapses, which is believed to underlie memory and learning. Cell-specific factors are thought to control expression of different isoforms, possibly contributing to the functional diversity of the subunits. Alternatively spliced transcript variants have been described.
基因ID	2902

基因名	GRIN1
Swiss	Q05586
别名	GRIN1;GluN1;MRD8;NMD-R1;NMDA1;NMDAR1;NR1;NMDA 1

产品验证



Western blot analysis of Phospho-GRIN1-S890 expressed in C6 using Phospho-GRIN1-S890 Rabbit pAb at 1:1000. Secondary antibody: HRP Goat Anti-Rabbit IgG (H+L) at 1:5000. Lysates/proteins: 30ug per lane. Blocking buffer: 5% non-fat dry milk in TBST. Detection: ECL Enhanced Kit. Exposure time: 120s.

实验步骤

访问官网浏览详情: www.ablybio.cn