

Phospho-PAK2-S20 Rabbit pAb

货号: **AYP20392**

产品信息

反应	Human,Mouse
宿主	Rabbit
克隆性	Polyclonal
预测反应	
应用	WB
推荐浓度	WB: 1:500 - 1:2000
理论分子量	58kDa
实测分子量	58kDa
形式	Liquid
保存条件	Store at -20°C. Avoid freeze / thaw cycles. Buffer: PBS with 0.01% thiomersal,50% glycerol,pH7.3.
偶联物	Unconjugated
阳性对照	HeLa,NIH/3T3
细胞定位	Cytoplasm,Cytoplasm,Lipid-anchor,Membrane,Nucleus,perinuclear region
纯化	Affinity purification

抗原信息

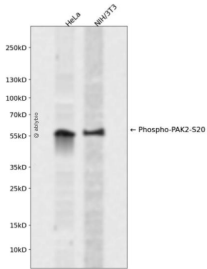
抗原信息	A synthetic phosphorylated peptide around S20 of human PAK2 (NP_002568.2).
序列	MSSTI

靶点信息

研究背景	The p21 activated kinases (PAK) are critical effectors that link Rho GTPases to cytoskeleton reorganization and nuclear signaling. The PAK proteins are a family of serine/threonine kinases that serve as targets for the small GTP binding proteins, CDC42 and RAC1, and have been implicated in a wide range of biological activities. The protein encoded by this gene is activated by proteolytic cleavage during caspase-mediated apoptosis, and may play a role in regulating the apoptotic events in the dying cell.
基因ID	5062

基因名	PAK2
Swiss	Q13177
别名	PAK2;PAK65;PAKgamma

产品验证



Western blot analysis of Phospho-PAK2-S20 expressed in HeLa,NIH/3T3 using Phospho-PAK2-S20 Rabbit pAb at 1:1000. Secondary antibody: HRP Goat Anti-Rabbit IgG (H+L) at 1:5000. Lysates/proteins: 30ug per lane. Blocking buffer: 5% non-fat dry milk in TBST. Detection: ECL Enhanced Kit. Exposure time: 120s.

实验步骤

访问官网浏览详情: www.ablybio.cn