

Phospho-HP1 gamma/CBX3-S83 Rabbit pAb

货号: AYP20390

产品信息

反应	Human,Mouse
宿主	Rabbit
克隆性	Polyclonal
预测反应	
应用	WB
推荐浓度	WB: 1:500 - 1:1000
理论分子量	20kDa
实测分子量	22kDa
形式	Liquid
保存条件	Store at -20°C. Avoid freeze / thaw cycles. Buffer: PBS with 0.01% thiomersal,50% glycerol,pH7.3.
偶联物	Unconjugated
阳性对照	A-431,NIH/3T3
细胞定位	Nucleus
纯化	Affinity purification

抗原信息

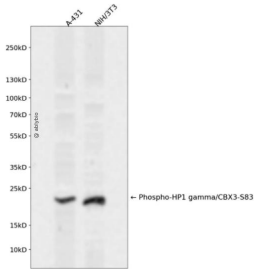
抗原信息	A synthetic phosphorylated peptide around S83 of human HP1 gamma/CBX3 (NP_009207.2).
序列	RKSLS

靶点信息

研究背景	At the nuclear envelope, the nuclear lamina and heterochromatin are adjacent to the inner nuclear membrane. The protein encoded by this gene binds DNA and is a component of heterochromatin. This protein also can bind lamin B receptor, an integral membrane protein found in the inner nuclear membrane. The dual binding functions of the encoded protein may explain the association of heterochromatin with the inner nuclear membrane. This protein binds histone H3 tails methylated at Lys-9 sites. This protein is also recruited to sites of ultraviolet-induced DNA damage and double-strand breaks. Two transcript variants encoding the same protein but differing in the 5' UTR, have been found for this gene.
基因ID	11335

基因名	CBX3
Swiss	Q13185
别名	CBX3;HECH;HP1-GAMMA;HP1Hs-gamma

产品验证



Western blot analysis of Phospho-HP1 gamma/CBX3-S83 expressed in A-431,NIH/3T3 using Phospho-HP1 gamma/CBX3-S83 Rabbit pAb at 1:1000. Secondary antibody: HRP Goat Anti-Rabbit IgG (H+L) at 1:5000. Lysates/proteins: 30ug per lane. Blocking buffer: 5% non-fat dry milk in TBST. Detection: ECL Enhanced Kit. Exposure time: 120s.

实验步骤

访问官网浏览详情: www.ablybio.cn