

Phospho-BCAR1-Y410 Rabbit pAb

货号: **AYP20379**

产品信息

反应	Human,Mouse
宿主	Rabbit
克隆性	Polyclonal
预测反应	
应用	WB
推荐浓度	WB: 1:500 - 1:2000
理论分子量	77kDa/93kDa/95kDa/97kDa
实测分子量	140kDa
形式	Liquid
保存条件	Store at -20°C. Avoid freeze / thaw cycles. Buffer: PBS with 0.01% thiomersal,50% glycerol,pH7.3.
偶联物	Unconjugated
阳性对照	HeLa
细胞定位	Cell junction,Cytoplasm,focal adhesion
纯化	Affinity purification

抗原信息

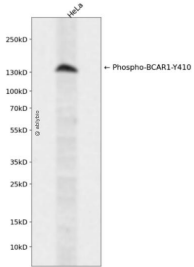
抗原信息	A synthetic phosphorylated peptide around Y410 of human BCAR1 (NP_055382.2).
序列	GVYAV

靶点信息

研究背景	BCAR1, or CAS, is an Src (MIM 190090) family kinase substrate involved in various cellular events, including migration, survival, transformation, and invasion (Sawada et al., 2006 [PubMed 17129785]).[supplied by OMIM, May 2009]
基因ID	9564
基因名	BCAR1

Swiss	P56945
别名	BCAR1;CAS;CAS1;CASS1;CRKAS;P130Cas

产品验证



实验步骤

访问官网浏览详情: www.ablybio.cn