

Phospho-Filamin A-S2152 Rabbit pAb

货号: **AYP20375**

产品信息

反应	Human,Mouse,Rat
宿主	Rabbit
克隆性	Polyclonal
预测反应	
应用	WB
推荐浓度	WB: 1:500 - 1:2000
理论分子量	280kDa
实测分子量	300kDa
形式	Liquid
保存条件	Store at -20°C. Avoid freeze / thaw cycles. Buffer: PBS with 0.01% thiomersal,50% glycerol,pH7.3.
偶联物	Unconjugated
阳性对照	HeLa,C6
细胞定位	Cytoplasm,cell cortex,cytoskeleton
纯化	Affinity purification

抗原信息

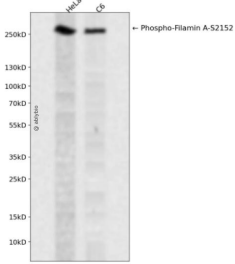
抗原信息	A synthetic phosphorylated peptide around S2152 of human Filamin A (NP_001104026.1).
序列	APSV A

靶点信息

研究背景	The protein encoded by this gene is an actin-binding protein that crosslinks actin filaments and links actin filaments to membrane glycoproteins. The encoded protein is involved in remodeling the cytoskeleton to effect changes in cell shape and migration. This protein interacts with integrins, transmembrane receptor complexes, and second messengers. Defects in this gene are a cause of several syndromes, including periventricular nodular heterotopias (PVNH1, PVNH4), otopalatodigital syndromes (OPD1, OPD2), frontometaphyseal dysplasia (FMD), Melnick-Needles syndrome (MNS), and X-linked congenital idiopathic intestinal pseudoobstruction (CIIPX). Two transcript variants encoding different isoforms have been found for this gene.
------	---

基因ID	2316
基因名	FLNA
Swiss	P21333
别名	FLNA;ABP-280;ABPX;CSBS;CVD1;FLN;FLN-A;FLN1;FMD;MNS;NHBP;OPD;OPD1;OPD2;XLVD;XMVD;filamin-A

产品验证



Western blot analysis of Phospho-Filamin A-S2152 expressed in HeLa, C6 using Phospho-Filamin A-S2152 Rabbit pAb at 1:1000. Secondary antibody: HRP Goat Anti-Rabbit IgG (H+L) at 1:5000. Lysates/proteins: 30ug per lane. Blocking buffer: 5% non-fat dry milk in TBST. Detection: ECL Enhanced Kit. Exposure time: 120s.

实验步骤

访问官网浏览详情: www.ablybio.cn