

Phospho-EIF4B-S422 Rabbit pAb

货号: AYP20370

产品信息

反应	Human
宿主	Rabbit
克隆性	Polyclonal
预测反应	
应用	WB
推荐浓度	WB: 1:500 - 1:2000
理论分子量	64kDa/69kDa
实测分子量	80kDa
形式	Liquid
保存条件	Store at -20°C. Avoid freeze / thaw cycles. Buffer: PBS with 0.01% thiomersal, 50% glycerol, pH7.3.
偶联物	Unconjugated
阳性对照	HeLa
细胞定位	cytosol, eukaryotic translation initiation factor 4F complex
纯化	Affinity purification

抗原信息

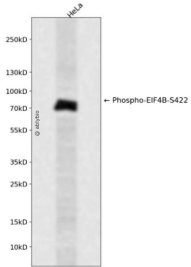
抗原信息	A synthetic phosphorylated peptide around S422 of human EIF4B (NP_001408.2).
序列	TGSES

靶点信息

研究背景	Required for the binding of mRNA to ribosomes. Functions in close association with EIF4-F and EIF4-A. Binds near the 5'-terminal cap of mRNA in presence of EIF-4F and ATP. Promotes the ATPase activity and the ATP-dependent RNA unwinding activity of both EIF4-A and EIF4-F.
基因ID	1975
基因名	EIF4B

Swiss	P23588
别名	EIF4B;EIF-4B;PRO1843

产品验证



实验步骤

访问官网浏览详情: www.ablybio.cn