

# Phospho-PPP1R12A-S507 Rabbit pAb

货号: AYP20367

## 产品信息

|       |  |
|-------|--|
| 反应    | Human  |
| 宿主    | Rabbit   |
| 克隆性   | Polyclonal   |
| 预测反应  |  |
| 应用    | WB   |
| 推荐浓度  | <b>WB:</b> 1:500 - 1:2000  |
| 理论分子量 | 105kDa/109kDa/111kDa/115kDa  |
| 实测分子量 | 135kDa   |
| 形式    | Liquid   |
| 保存条件  | Store at -20°C. Avoid freeze / thaw cycles.<br>Buffer: PBS with 0.01% thiomersal, 50% glycerol, pH7.3. |
| 偶联物   | Unconjugated   |
| 阳性对照  | HeLa, Jurkat   |
| 细胞定位  | Cytoplasm  |
| 纯化    | Affinity purification  |

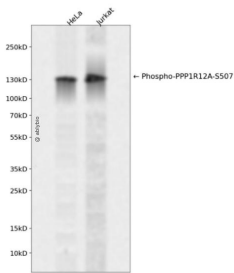
## 抗原信息

|      |  |
|------|--|
| 抗原信息 | A synthetic phosphorylated peptide around S507 of human PPP1R12A (NP_001137357.1). |
| 序列   | LASTS  |

## 靶点信息

|       |  |
|-------|--|
| 研究背景  | Myosin phosphatase target subunit 1, which is also called the myosin-binding subunit of myosin phosphatase, is one of the subunits of myosin phosphatase. Myosin phosphatase regulates the interaction of actin and myosin downstream of the guanosine triphosphatase Rho. The small guanosine triphosphatase Rho is implicated in myosin light chain (MLC) phosphorylation, which results in contraction of smooth muscle and interaction of actin and myosin in nonmuscle cells. The guanosine triphosphate (GTP)-bound, active form of RhoA (GTP.RhoA) specifically interacted with the myosin-binding subunit (MBS) of myosin phosphatase, which regulates the extent of phosphorylation of MLC. Rho-associated kinase (Rho-kinase), which is activated by GTP. RhoA, phosphorylated MBS and consequently inactivated myosin phosphatase. Overexpression of RhoA or activated RhoA in NIH 3T3 cells increased phosphorylation of MBS and MLC. Thus, Rho appears to inhibit myosin phosphatase through the action of Rho-kinase. Several transcript variants encoding different isoforms have been found for this gene. |
| 基因ID  | 4659   |
| 基因名   | PPP1R12A   |
| Swiss | O14974   |
| 别名    | PPP1R12A;M130;MBS;MYPT1;MYPT1  |

## 产品验证



Western blot analysis of Phospho-PPP1R12A-S507 expressed in HeLa, Jurkat using Phospho-PPP1R12A-S507 Rabbit pAb at 1:1000. Secondary antibody: HRP Goat Anti-Rabbit IgG (H+L) at 1:5000. Lysates/proteins: 30ug per lane. Blocking buffer: 5% non-fat dry milk in TBST. Detection: ECL Enhanced Kit. Exposure time: 120s.

## 实验步骤

访问官网浏览详情: [www.ablybio.cn](http://www.ablybio.cn)