

Phospho-EphA3-Y779 Rabbit pAb

货号: AYP20366

产品信息

反应	Human
宿主	Rabbit
克隆性	Polyclonal
预测反应	
应用	WB
推荐浓度	WB: 1:500 - 1:2000
理论分子量	60kDa/110kDa
实测分子量	110kDa
形式	Liquid
保存条件	Store at -20°C. Avoid freeze / thaw cycles. Buffer: PBS with 0.01% thiomersal,50% glycerol,pH7.3.
偶联物	Unconjugated
阳性对照	293T,Hela
细胞定位	Cell membrane,Secreted,Single-pass type I membrane protein
纯化	Affinity purification

抗原信息

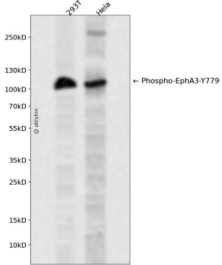
抗原信息	A synthetic phosphorylated peptide around Y779 of human EphA3 (NP_005224.2).
序列	AAYTT

靶点信息

研究背景	This gene belongs to the ephrin receptor subfamily of the protein-tyrosine kinase family. EPH and EPH-related receptors have been implicated in mediating developmental events, particularly in the nervous system. Receptors in the EPH subfamily typically have a single kinase domain and an extracellular region containing a Cys-rich domain and 2 fibronectin type III repeats. The ephrin receptors are divided into 2 groups based on the similarity of their extracellular domain sequences and their affinities for binding ephrin-A and ephrin-B ligands. This gene encodes a protein that binds ephrin-A ligands. Two alternatively spliced transcript variants have been described for this gene.
基因ID	2042

基因名	EPHA3
Swiss	P29320
别名	EK4;ETK;HEK;ETK1;HEK4;TYRO4;EPHA3

产品验证



Western blot analysis of Phospho-EphA3-Y779 expressed in 293T, HeLa using Phospho-EphA3-Y779 R abbit pAb at 1:1000. Secondary antibody: HRP Goat Anti-Rabbit IgG (H+L) at 1:5000. Lysates/proteins: 30ug per lane. Blocking buffer: 5% non-fat dry milk in TBST. Detection: ECL Enhanced Kit. Exposure time: 120s.

实验步骤

访问官网浏览详情: www.ablybio.cn