

# Phospho-PKC (pan) (gamma)-T514 Rabbit pAb

货号: AYP20359

## 产品信息

反应	Human,Mouse,Rat
宿主	Rabbit
克隆性	Polyclonal
预测反应	
应用	WB
推荐浓度	<b>WB:</b> 1:500 - 1:2000
理论分子量	59-67kDa/74-83kDa
实测分子量	80kDa
形式	Liquid
保存条件	Store at -20°C. Avoid freeze / thaw cycles. Buffer: PBS with 0.02% sodium azide,50% glycerol,pH7.3.
偶联物	Unconjugated
阳性对照	RAW264.7,C6
细胞定位	cytoplasm,cytosol,endoplasmic reticulum,extracellular exosome,mitochondrial membrane,mitochondrion, nucleoplasm,perinuclear region of cytoplasm,plasma membrane
纯化	Affinity purification

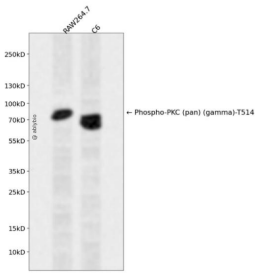
## 抗原信息

抗原信息	A synthetic phosphorylated peptide around T514 of human PKC (pan) (gamma)PRKCA (NP_002728.2).
序列	YQPYG

## 靶点信息

研究背景	Protein kinase C (PKC) is a family of serine- and threonine-specific protein kinases that can be activated by calcium and the second messenger diacylglycerol. PKC family members phosphorylate a wide variety of protein targets and are known to be involved in diverse cellular signaling pathways. PKC family members also serve as major receptors for phorbol esters, a class of tumor promoters. Each member of the PKC family has a specific expression profile and is believed to play a distinct role in cells. The protein encoded by this gene is one of the PKC family members. This kinase has been reported to play roles in many different cellular processes, such as cell adhesion, cell transformation, cell cycle checkpoint, and cell volume control. Knockout studies in mice suggest that this kinase may be a fundamental regulator of cardiac contractility and Ca(2+) handling in myocytes. [provided by RefSeq, Jul 2008]
基因ID	5578,5579,5580,5581,5582,5583,5588
基因名	PRKCA,PRKCB,PRKCD,PRKCE,PRKCG,PRKCH,PRKCQ
Swiss	P17252,P05771,Q05655,Q02156,P05129,P24723,Q04759
别名	PRKCA/PRKCB/PRKCD/PRKCE/PRKCG/PRKCH/PRKCQ

## 产品验证



Western blot analysis of Phospho-PKC (pan) (gamma)-T514 expressed in RAW264.7, C6 using Phospho-PKC (pan) (gamma)-T514 Rabbit pAb at 1:1000. Secondary antibody: HRP Goat Anti-Rabbit IgG (H+L) at 1:5000. Lysates/proteins: 30ug per lane. Blocking buffer: 5% non-fat dry milk in TB ST. Detection: ECL Enhanced Kit. Exposure time: 120s.

## 实验步骤

访问官网浏览详情: [www.ablybio.cn](http://www.ablybio.cn)