

Phospho-cdc25C-S216 Rabbit pAb

货号: **AYP20349**

产品信息

反应	Human,Rat
宿主	Rabbit
克隆性	Polyclonal
预测反应	
应用	WB IHC
推荐浓度	WB: 1:500 - 1:2000 IHC: 1:50 - 1:200
理论分子量	45kDa/48kDa/50kDa/53kDa
实测分子量	53kDa
形式	Liquid
保存条件	Store at -20°C. Avoid freeze / thaw cycles. Buffer: PBS with 0.01% thiomersal,50% glycerol,pH7.3.
偶联物	Unconjugated
阳性对照	HT-29
细胞定位	Nucleus
纯化	Affinity purification

抗原信息

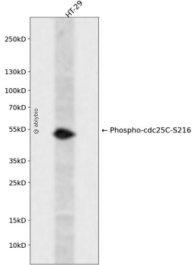
抗原信息	A synthetic phosphorylated peptide around S216 of human cdc25C (NP_001781.2).
序列	SPSMP

靶点信息

研究背景	This gene encodes a conserved protein that plays a key role in the regulation of cell division. The encoded protein directs dephosphorylation of cyclin B-bound CDC2 and triggers entry into mitosis. It also suppresses p53-induced growth arrest. Multiple alternatively spliced transcript variants of this gene have been described.
基因ID	995

基因名	CDC25C
Swiss	P30307
别名	CDC25C;CDC25;PPP1R60

产品验证



Western blot analysis of Phospho-cdc25C-S216 expressed in HT-29 using Phospho-cdc25C-S216 Rabbit pAb at 1:1000. Secondary antibody: HRP Goat Anti-Rabbit IgG (H+L) at 1:5000. Lysates/proteins: 30ug per lane. Blocking buffer: 5% non-fat dry milk in TBST. Detection: ECL Enhanced Kit. Exposure time: 12 0s.

实验步骤

访问官网浏览详情: www.ablybio.cn