

CAST Rabbit pAb

货号: **AYP20338**

产品信息

反应	Human,Mouse,Rat
宿主	Rabbit
克隆性	Polyclonal
预测反应	
应用	WB IHC
推荐浓度	WB: 1:200 - 1:2000 IHC: 1:50 - 1:200
理论分子量	63kDa/71- 84kDa
实测分子量	124kDa
形式	Liquid
保存条件	Store at -20°C. Avoid freeze / thaw cycles. Buffer: PBS with 0.02% sodium azide,50% glycerol,pH7.3.
偶联物	Unconjugated
阳性对照	NCI-H460
细胞定位	cytoplasm,cytosol,endoplasmic reticulum
纯化	Affinity purification

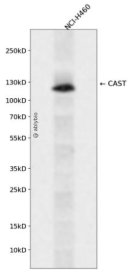
抗原信息

抗原信息	A synthetic peptide corresponding to a sequence within amino acids 600 to the C-terminus of human CAST (NP_001177371.1).
序列	TIPPEYRHLLDDNGQDKPVKPPTKSEDSKPPADDQDPIDALSGDLDCPSTTETSQNTAKDKCKKAASSSKAPKNGGKA KDSAKTTEETSKPKDD

靶点信息

研究背景	The protein encoded by this gene is an endogenous calpain (calcium-dependent cysteine protease) inhibitor. It consists of an N-terminal domain L and four repetitive calpain-inhibition domains (domains 1-4), and it is involved in the proteolysis of amyloid precursor protein. The calpain/calpastatin system is involved in numerous membrane fusion events, such as neural vesicle exocytosis and platelet and red-cell aggregation. The encoded protein is also thought to affect the expression levels of genes encoding structural or regulatory proteins. Alternatively spliced transcript variants encoding different isoforms have been described.
基因ID	831
基因名	CAST
Swiss	P20810
别名	CAST;BS-17;PLACK

产品验证



Western blot analysis of CAST expressed in NCI-H460 using CAST Rabbit pAb at 1:1000. Secondary antibody: HRP Goat Anti-Rabbit IgG (H+L) at 1:5000. Lysates/proteins: 30ug per lane. Blocking buffer: 5% non-fat dry milk in TBST. Detection: ECL Enhanced Kit. Exposure time: 120s.

实验步骤

访问官网浏览详情: www.ablybio.cn