

# TRAF1 Rabbit pAb

货号: **AYP20332**

## 产品信息

反应	Human,Mouse,Rat
宿主	Rabbit
克隆性	Polyclonal
预测反应	
应用	WB
推荐浓度	<b>WB:</b> 1:500 - 1:2000
理论分子量	33kDa/46kDa
实测分子量	50kDa
形式	Liquid
保存条件	Store at -20°C. Avoid freeze / thaw cycles. Buffer: PBS with 0.01% thiomersal,50% glycerol,pH7.3.
偶联物	Unconjugated
阳性对照	SGC-7901,A-431,U-937,Jurkat,Mouse spleen,Rat thymus
细胞定位	cytoplasm,cytoplasmic side of plasma membrane,cytosol
纯化	Affinity purification

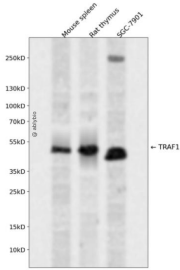
## 抗原信息

抗原信息	Recombinant fusion protein containing a sequence corresponding to amino acids 217-416 of human TRAF 1 (NP_005649.1).
序列	TSIHQSQLDRERILSLEQRVVELQQTLAQKDQALGKLEQSLRLMEEASFDGTFWLKITNVTRRCHEACGRTVSLFSPAFY TAKYGYKLCLRLYLNGDGTGKRTHLSLFIVIMRGEYDALLPWPFRNKVTFMLLDQNNREHAIDAFRDLSSASFQRPQSET NVASGCPLFFPLSKLQSPKHAYVKDDTMFLKCIVETST

## 靶点信息

研究背景	The protein encoded by this gene is a member of the TNF receptor (TNFR) associated factor (TRAF) protein family. TRAF proteins associate with, and mediate the signal transduction from various receptors of the TNFR superfamily. This protein and TRAF2 form a heterodimeric complex, which is required for TNF-alpha-mediated activation of MAPK8/JNK and NF-kappaB. The protein complex formed by this protein and TRAF2 also interacts with inhibitor-of-apoptosis proteins (IAPs), and thus mediates the anti-apoptotic signals from TNF receptors. The expression of this protein can be induced by Epstein-Barr virus (EBV). EBV infection membrane protein 1 (LMP1) is found to interact with this and other TRAF proteins; this interaction is thought to link LMP1-mediated B lymphocyte transformation to the signal transduction from TNFR family receptors. Three transcript variants encoding two different isoforms have been found for this gene.
基因ID	7185
基因名	TRAF1
Swiss	Q13077
别名	TRAF1;EBI6;MGC:10353

## 产品验证



Western blot analysis of TRAF1 expressed in Mouse spleen,Rat thymus,SGC-7901 using TRAF1 Rabbit p Ab at 1:1000. Secondary antibody: HRP Goat Anti-Rabbit IgG (H+L) at 1:5000. Lysates/proteins: 30ug per lane. Blocking buffer: 5% non-fat dry milk in TBST. Detection: ECL Enhanced Kit. Exposure time: 120s

## 实验步骤

访问官网浏览详情: [www.ablybio.cn](http://www.ablybio.cn)