

# SIPA1L1 Rabbit pAb

货号: AYP20330

## 产品信息

反应	Mouse
宿主	Rabbit
克隆性	Polyclonal
预测反应	
应用	WB
推荐浓度	<b>WB:</b> 1:500 - 1:1000
理论分子量	197kDa/200kDa
实测分子量	180kDa
形式	Liquid
保存条件	Store at -20°C. Avoid freeze / thaw cycles. Buffer: PBS with 0.01% thiomersal,50% glycerol,pH7.3.
偶联物	Unconjugated
阳性对照	Mouse brain
细胞定位	actin cytoskeleton,cytoplasm,dendritic spine,plasma membrane,postsynaptic density
纯化	Affinity purification

## 抗原信息

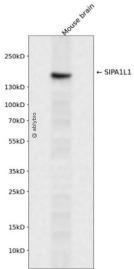
抗原信息	Recombinant fusion protein containing a sequence corresponding to amino acids 1480-1700 of human SIPA1L1 (NP_056371.1).
序列	TSKYLIGWKKPEGTINSVGFMDTRKRHRQSDGNEIAHTRLRASTRDLRASPKPTSKSTIEEDLKKLIDLESPTPESQKSFKFH ALSSPQSPFPSTPTSRRALHRTLSDESIYNSQREHFFTSRASLLDQALPNDVLFSSSTYPSLPKSLPLRRPSYTLGMKSLHGFE SASDSSLTDIQETRRQPMPDPGLMPLPDTAADLDWSNLVDAAKAYEVQRASFFAAS

## 靶点信息

研究背景	Stimulates the GTPase activity of RAP2A. Promotes reorganization of the actin cytoskeleton and recruits DLG4 to F-actin. Contributes to the regulation of dendritic spine morphogenesis (By similarity).
基因ID	26037

基因名	SIPA1L1
Swiss	O43166
别名	E6TP1;SIPA1L1

## 产品验证



Western blot analysis of SIPA1L1 expressed in Mouse brain using SIPA1L1 Rabbit pAb at 1:1000. Secondary antibody: HRP Goat Anti-Rabbit IgG (H+L) at 1:5000. Lysates/proteins: 30ug per lane. Blocking buffer: 5 % non-fat dry milk in TBST. Detection: ECL Enhanced Kit. Exposure time: 120s.

## 实验步骤

访问官网浏览详情: [www.ablybio.cn](http://www.ablybio.cn)