

# BVES Rabbit pAb

货号: **AYP20325**

## 产品信息

反应	Human,Mouse
宿主	Rabbit
克隆性	Polyclonal
预测反应	
应用	WB
推荐浓度	<b>WB:</b> 1:500 - 1:2000
理论分子量	41kDa
实测分子量	70kDa
形式	Liquid
保存条件	Store at -20°C. Avoid freeze / thaw cycles. Buffer: PBS with 0.01% thiomersal,50% glycerol,pH7.3.
偶联物	Unconjugated
阳性对照	NCI-H460
细胞定位	Cell junction,Lateral cell membrane,Membrane,Multi-pass membrane protein,tight junction
纯化	Affinity purification

## 抗原信息

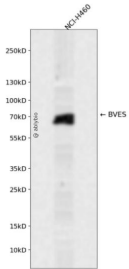
抗原信息	Recombinant fusion protein containing a sequence corresponding to amino acids 241-360 of human BVES (NP_001186492.1).
序列	SEPFLYEIFRYLIGKDITNKLYSLNDPTLNDKAKKLEHQLSLCTQISMLEMRNSIASSSDSDDGLHQFLRGTSMSLHVS SPHQRASAKMKPIEEGAEDDDVFEPAASPNTLKVHQLP

## 靶点信息

研究背景	This gene encodes a member of the POP family of proteins containing three putative transmembrane domains. This gene is expressed in cardiac and skeletal muscle and may play an important role in development of these tissues. The mouse ortholog may be involved in the regeneration of adult skeletal muscle and may act as a cell adhesion molecule in coronary vasculogenesis. Three transcript variants encoding the same protein have been found for this gene.
基因ID	11149

基因名	BVES
Swiss	Q8NE79
别名	BVES;HBVES;LGMD2X;POP1;POPDC1

## 产品验证



Western blot analysis of BVES expressed in NCI-H460 using BVES Rabbit pAb at 1:1000. Secondary antibody: HRP Goat Anti-Rabbit IgG (H+L) at 1:5000. Lysates/proteins: 30ug per lane. Blocking buffer: 5% non-fat dry milk in TBST. Detection: ECL Enhanced Kit. Exposure time: 120s.

## 实验步骤

访问官网浏览详情: [www.ablybio.cn](http://www.ablybio.cn)