

K27-linkage Specific Polyubiquitin Rabbit pAb

货号: AYP20322

产品信息

反应	Human,Mouse,Rat
宿主	Rabbit
克隆性	Polyclonal
预测反应	
应用	WB DB
推荐浓度	WB: 1:500 - 1:2000 DB: 1:500 - 1:1000
理论分子量	
实测分子量	15-150kD
形式	Liquid
保存条件	Store at -20°C. Avoid freeze / thaw cycles. Buffer: PBS with 0.01% thiomersal,50% glycerol,pH7.3.
偶联物	Unconjugated
阳性对照	NIH/3T3,RAW264.7,C6,Mouse brain,Mouse kidney
细胞定位	
纯化	Affinity purification

抗原信息

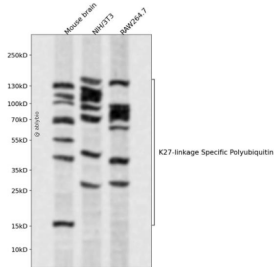
抗原信息	A synthetic peptide corresponding to a sequence containing polyubiquitinated protein (K27 linkage).
序列	

靶点信息

研究背景	Ubiquitination, one type of the most common post-translational modification, mediates the regulation of protein homeostasis in vivo. Since ubiquitin itself contains multiple lysine residues and one N-terminal free amino group, eight types of ubiquitin chains can be formed. The K27 ubiquitin chain is formed through the ubiquitination of the ubiquitin Lys27 (K27), which adopts a compact conformation. In recent years, biological function of the K27 ubiquitin chain in innate immunity, protein homeostasis and DNA damage has been discovered, but the molecular mechanisms of K27 ubiquitin chain assembly, recognition and hydrolysis are still poorly understood.
基因ID	

基因名	
Swiss	
别名	

产品验证



Western blot analysis of K27-linkage Specific Polyubiquitin expressed in Mouse brain,NIH/3T3,R AW264.7 using K27-linkage Specific Polyubiquitin Rabbit pAb at 1:1000. Secondary antibody: H RP Goat Anti-Rabbit IgG (H+L) at 1:5000. Lysates/proteins: 30ug per lane. Blocking buffer: 5% non-fat dry milk in TBST. Detection: ECL Enhanced Kit. Exposure time: 120s.

实验步骤

访问官网浏览详情: www.ablybio.cn