

MTM1 Rabbit pAb

货号: **AYP20319**

产品信息

反应	Human,Mouse,Rat
宿主	Rabbit
克隆性	Polyclonal
预测反应	
应用	WB
推荐浓度	WB: 1:500 - 1:1000
理论分子量	66kDa/69kDa
实测分子量	60KDa
形式	Liquid
保存条件	Store at -20°C. Avoid freeze / thaw cycles. Buffer: PBS with 0.05% proclin300,50% glycerol,pH7.3.
偶联物	Unconjugated
阳性对照	HeLa,HT-29,Mouse heart
细胞定位	Cell membrane,Cell projection,Cytoplasm,Late endosome,Peripheral membrane protein,filopodium,ruffle
纯化	Affinity purification

抗原信息

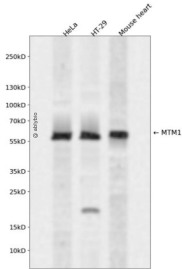
抗原信息	Recombinant fusion protein containing a sequence corresponding to amino acids 484-603 of human MTM 1 (NP_000243.1).
序列	SARERQKVTERTVSLWLSLINSNKEKFKNPFYTKVINRVLYPVASMRHLELWVNYIRWNPRIKQQQPNPVEQRYMELLALR DEYIKRLEELQLANS AKLSDPPTSPSSPSQMMPHVQTHF

靶点信息

研究背景	This gene encodes a dual-specificity phosphatase that acts on both phosphotyrosine and phosphoserine. It is required for muscle cell differentiation and mutations in this gene have been identified as being responsible for X-linked myotubular myopathy.
基因ID	4534

基因名	MTM1
Swiss	Q13496
别名	MTM1;CNM;MTMX;XLMTM

产品验证



Western blot analysis of MTM1 expressed in HeLa, HT-29, Mouse heart using MTM1 Rabbit pAb at 1:1000. Secondary antibody: HRP Goat Anti-Rabbit IgG (H+L) at 1:5000. Lysates/proteins: 30ug per lane. Blocking buffer: 5% non-fat dry milk in TBST. Detection: ECL Enhanced Kit. Exposure time: 120s.

实验步骤

访问官网浏览详情: www.ablybio.cn