

PSME3 Rabbit pAb

货号: AYP20315

产品信息

反应	Human,Rat
宿主	Rabbit
克隆性	Polyclonal
预测反应	
应用	WB
推荐浓度	WB: 1:500 - 1:2000
理论分子量	29kDa/30kDa
实测分子量	32kDa
形式	Liquid
保存条件	Store at -20°C. Avoid freeze / thaw cycles. Buffer: PBS with 0.02% sodium azide,50% glycerol,pH7.3.
偶联物	Unconjugated
阳性对照	MCF7,PC-12
细胞定位	Cytoplasm,Nucleus
纯化	Affinity purification

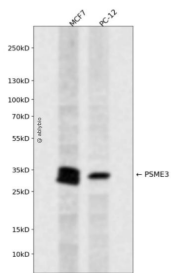
抗原信息

抗原信息	Recombinant fusion protein containing a sequence corresponding to amino acids 1-254 of human PSME3 (NP_789839.1).
序列	MASLLKVDQEVKLVDSFRERITSEAEDLVANFFPKLLEDSFLKEPILNIHDLTQIHSDMNLVPPDPILLTNSHDGLDGPT YKRRRLDECEEFQGTKVFVMPNGMLKSNQQLVDIIEKVKPEIRLLIEKCNTPSGKGPHICFDLQVKMWVQLLIPRIEDGNN FGVSIQEETVAELRTVESEAASYLDQISRYYITRAKLVSKIAPHYVEDYRRTVTEIDEKEYISLRLLIISLRNQYVTLHDMILKNI EK

靶点信息

研究背景	The 26S proteasome is a multicatalytic proteinase complex with a highly ordered structure composed of 2 complexes, a 20S core and a 19S regulator. The 20S core is composed of 4 rings of 28 non-identical sub units; 2 rings are composed of 7 alpha subunits and 2 rings are composed of 7 beta subunits. The 19S regulator is composed of a base, which contains 6 ATPase subunits and 2 non-ATPase subunits, and a lid, which contains up to 10 non-ATPase subunits. Proteasomes are distributed throughout eukaryotic cells at a high concentration and cleave peptides in an ATP/ubiquitin-dependent process in a non-lysosomal pathway. An essential function of a modified proteasome, the immunoproteasome, is the processing of class I MHC peptides. The immunoproteasome contains an alternate regulator, referred to as the 11S regulator or PA28, that replaces the 19S regulator. Three subunits (alpha, beta and gamma) of the 11S regulator have been identified. This gene encodes the gamma subunit of the 11S regulator. Six gamma subunits combine to form a homohexameric ring. Alternate splicing results in multiple transcript variants.
基因ID	10197
基因名	PSME3
Swiss	P61289
别名	PSME3;HEL-S-283;Ki;PA28-gamma;PA28G;PA28gamma;REG-GAMMA

产品验证



Western blot analysis of PSME3 expressed in MCF7, PC-12 using PSME3 Rabbit pAb at 1:1000. Secondary antibody: HRP Goat Anti-Rabbit IgG (H+L) at 1:5000. Lysates/proteins: 30ug per lane. Blocking buffer: 5 % non-fat dry milk in TBST. Detection: ECL Enhanced Kit. Exposure time: 120s.

实验步骤

访问官网浏览详情: www.ablybio.cn