

CARD8 Rabbit pAb

货号: **AYP20313**

产品信息

反应	Human
宿主	Rabbit
克隆性	Polyclonal
预测反应	
应用	WB
推荐浓度	WB: 1:500 - 1:2000
理论分子量	32kDa/44kDa/48kDa/55kDa/60kDa
实测分子量	60kDa
形式	Liquid
保存条件	Store at -20°C. Avoid freeze / thaw cycles. Buffer: PBS with 0.02% sodium azide,50% glycerol,pH7.3.
偶联物	Unconjugated
阳性对照	K-562,A673,ES-2
细胞定位	Cytoplasm,Nucleus
纯化	Affinity purification

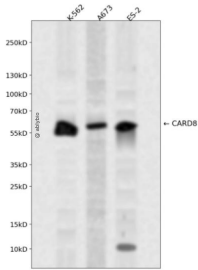
抗原信息

抗原信息	Recombinant fusion protein containing a sequence corresponding to amino acids 1-200 of human CARD8 (NP_003796.1).
序列	MEARDKQVLRSLRLELGAEVLVEGLVLQYLYQEGILTENHIQEINAQTTGLRKTMLLLDILPSRGPKAFDTFLDSLQEFPWVR EKLLKAREEAMTDLPAGDRLTGIPSHILNSSPSDRQINQLAQRLGPEWEPMVLSLGLSQTDIYRCKANHPHNVQSQVVEAF IRWRQRFGKQATFQSLHNGLRAVEVDPSLLLHMLE

靶点信息

研究背景	The protein encoded by this gene belongs to the caspase recruitment domain (CARD)-containing family of proteins, which are involved in pathways leading to activation of caspases or nuclear factor kappa-B (NF KB). This protein may be a component of the inflammasome, a protein complex that plays a role in the activation of proinflammatory caspases. It is thought that this protein acts as an adaptor molecule that negatively regulates NFKB activation, CASP1-dependent IL1B secretion, and apoptosis. Polymorphisms in this gene may be associated with a susceptibility to rheumatoid arthritis. Alternatively spliced transcript variants have been described for this gene.
基因ID	22900
基因名	CARD8
Swiss	Q9Y2G2
别名	CARD8;CARDINAL;DACAR;DAKAR;NDPP;NDPP1;TUCAN

产品验证



Western blot analysis of CARD8 expressed in K-562,A673,ES-2 using CARD8 Rabbit pAb at 1:1000. Secondary antibody: HRP Goat Anti-Rabbit IgG (H+L) at 1:5000. Lysates/proteins: 30ug per lane. Blocking buffer: 5% non-fat dry milk in TBST. Detection: ECL Enhanced Kit. Exposure time: 120s.

实验步骤

访问官网浏览详情: www.ablybio.cn