

TREM1 Rabbit pAb

货号: **AYP20312**

产品信息

反应	Human,Rat
宿主	Rabbit
克隆性	Polyclonal
预测反应	
应用	WB IHC
推荐浓度	WB: 1:500 - 1:2000 IHC: 1:100 - 1:200
理论分子量	17kDa/25kDa/26kDa
实测分子量	30kDa
形式	Liquid
保存条件	Store at -20°C. Avoid freeze / thaw cycles. Buffer: PBS with 0.02% sodium azide,50% glycerol,pH7.3.
偶联物	Unconjugated
阳性对照	HL-60
细胞定位	Cell membrane,Secreted,Single-pass type I membrane protein
纯化	Affinity purification

抗原信息

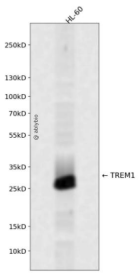
抗原信息	Recombinant fusion protein containing a sequence corresponding to amino acids 21-130 of human TREM1 (NP_061113.1).
序列	ATKLTEEKYELKEGQTLDVKCDYTLKFASSQKAWQIIRDGEMPKTLACTERPSKNSHPVQVGRILEDYHDHGLLRVMVNLQVEDSGLYQCVIYQPPKEPHMLFDRIR

靶点信息

研究背景	This gene encodes a receptor belonging to the Ig superfamily that is expressed on myeloid cells. This protein amplifies neutrophil and monocyte-mediated inflammatory responses triggered by bacterial and fungal infections by stimulating release of pro-inflammatory chemokines and cytokines, as well as increased surface expression of cell activation markers. Alternatively spliced transcript variants encoding different isoforms have been noted for this gene.
------	--

基因ID	54210
基因名	TREM1
Swiss	Q9NP99
别名	TREM1;CD354;TREM-1

产品验证



Western blot analysis of TREM1 expressed in HL-60 using TREM1 Rabbit pAb at 1:1000. Secondary antibody: HRP Goat Anti-Rabbit IgG (H+L) at 1:5000. Lysates/proteins: 30ug per lane. Blocking buffer: 5% non-fat dry milk in TBST. Detection: ECL Enhanced Kit. Exposure time: 120s.

实验步骤

访问官网浏览详情: www.ablybio.cn