

RALA Rabbit pAb

货号: **AYP20300**

产品信息

反应	Mouse,Rat
宿主	Rabbit
克隆性	Polyclonal
预测反应	
应用	WB IF/ICC
推荐浓度	WB: 1:500 - 1:2000 IF/ICC: 1:50 - 1:200
理论分子量	23kDa
实测分子量	24kDa
形式	Liquid
保存条件	Store at -20°C. Avoid freeze / thaw cycles. Buffer: PBS with 0.02% sodium azide,50% glycerol,pH7.3.
偶联物	Unconjugated
阳性对照	Mouse lung,Rat brain
细胞定位	Cell membrane,Cell surface,Cleavage furrow,Cytoplasmic side,Lipid-anchor,Midbody
纯化	Affinity purification

抗原信息

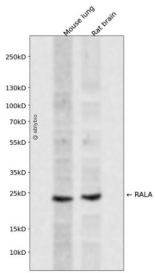
抗原信息	Recombinant fusion protein containing a sequence corresponding to amino acids 1-206 of human RALA (NP_005393.2).
序列	MAANKPKGQNSLALHKVIMVGGSGVGSALTLQFMYDEFVEDYEPTKADSYRKKVVLGDGEEVQIDILDTAGQEDYAAIRD NYFRSGEGFLCVFSITEMESFAATADFREQILRVKEDENVPFLVGNKSDLEDKRQVSVVEEAKNRAEQWNVNYVETSAKTR ANVDKVFDFLMREIRARKMEDSKEKNGKKRKRSLAKRIRERCCIL

靶点信息

研究背景	The product of this gene belongs to the small GTPase superfamily, Ras family of proteins. GTP-binding proteins mediate the transmembrane signaling initiated by the occupancy of certain cell surface receptors. This gene encodes a low molecular mass ras-like GTP-binding protein that shares about 50% similarity with other ras proteins.
------	--

基因ID	5898
基因名	RALA
Swiss	P11233
别名	RALA;RAL

产品验证



Western blot analysis of RALA expressed in Mouse lung,Rat brain using RALA Rabbit pAb at 1:1000. Secondary antibody: HRP Goat Anti-Rabbit IgG (H+L) at 1:5000. Lysates/proteins: 30ug per lane. Blocking buffer: 5% non-fat dry milk in TBST. Detection: ECL Enhanced Kit. Exposure time: 120s.

实验步骤

访问官网浏览详情: www.ablybio.cn