

MECP2 Rabbit pAb

货号: **AYP20278**

产品信息

反应	Human,Mouse
宿主	Rabbit
克隆性	Polyclonal
预测反应	
应用	WB IHC
推荐浓度	WB: 1:500 - 1:1000 IHC: 1:50 - 1:100
理论分子量	52kDa/53kDa
实测分子量	60kDa/80kDa
形式	Liquid
保存条件	Store at -20°C. Avoid freeze / thaw cycles. Buffer: PBS with 0.02% sodium azide,50% glycerol,pH7.3.
偶联物	Unconjugated
阳性对照	MCF7,SW620,Jurkat,Mouse lung,Mouse brain,293T
细胞定位	Nucleus
纯化	Affinity purification

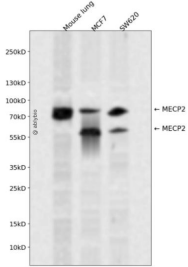
抗原信息

抗原信息	Recombinant fusion protein containing a sequence corresponding to amino acids 1-280 of human MECP2 (NP_004983.1).
序列	MVAGMLGLREEKSEDQLQGLKDKPLKFKKVKKDKKEEKEGKHEPVQPSAHHSAEPAEAGKAETSEGSAPSAPVPEASA SPKQRRSIIRDRGPMYDDPTLPEGWTRKLRKQKSGRSAGKYDVYLINPQGKAFRSKVELIAYFEKVGDTSLDPNDFDFTVT GRGSPSRREQPKPKPKSPKAPGTGRGRGRPKGSGTTRPKAATSEGVQVKRVLEKSPGKLLVKMPFQTSPGGKAEGGG ATTSTQVMVIKRPGRKRKAEADPQAIKKRGRKPGSVVAAAA

靶点信息

研究背景	DNA methylation is the major modification of eukaryotic genomes and plays an essential role in mammalian development. Human proteins MECP2, MBD1, MBD2, MBD3, and MBD4 comprise a family of nuclear proteins related by the presence in each of a methyl-CpG binding domain (MBD). Each of these proteins, with the exception of MBD3, is capable of binding specifically to methylated DNA. MECP2, MBD1 and MBD2 can also repress transcription from methylated gene promoters. In contrast to other MBD family members, MECP2 is X-linked and subject to X inactivation. MECP2 is dispensable in stem cells, but is essential for embryonic development. MECP2 gene mutations are the cause of most cases of Rett syndrome, a progressive neurologic developmental disorder and one of the most common causes of mental retardation in females. Alternative splicing results in multiple transcript variants encoding different isoforms.
基因ID	4204
基因名	MECP2
Swiss	P51608
别名	MECP2;AUTSX3;MRX16;MRX79;MRXS13;MRXSL;PPMX;RS;RTS;RTT

产品验证



Western blot analysis of MECP2 expressed in Mouse lung, MCF7, SW620 using MECP2 Rabbit pAb at 1:1000. Secondary antibody: HRP Goat Anti-Rabbit IgG (H+L) at 1:5000. Lysates/proteins: 30ug per lane. Blocking buffer: 5% non-fat dry milk in TBST. Detection: ECL Enhanced Kit. Exposure time: 120s.

实验步骤

访问官网浏览详情: www.ablybio.cn