

ErbB3/HER3 Rabbit pAb

货号: **AYP20264**

产品信息

反应	Human,Mouse,Rat
宿主	Rabbit
克隆性	Polyclonal
预测反应	
应用	WB IF/ICC
推荐浓度	WB: 1:500 - 1:1000 IF/ICC: 1:50 - 1:200
理论分子量	20kDa/36kDa/77kDa/141kDa/148kDa
实测分子量	185KDa
形式	Liquid
保存条件	Store at -20°C. Avoid freeze / thaw cycles. Buffer: PBS with 0.05% proclin300,50% glycerol,pH7.3.
偶联物	Unconjugated
阳性对照	293T,MCF7,A-431,Mouse liver
细胞定位	Cell membrane,Secreted,Single-pass type I membrane protein
纯化	Affinity purification

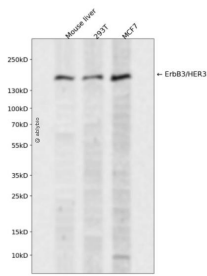
抗原信息

抗原信息	Recombinant fusion protein containing a sequence corresponding to amino acids 1275-1342 of human Er bB3/HER3 (NP_001973.2).
序列	DYAAMGACPASEQGYEEMRAFGQPGHQAPHVHYARLKLRSLEATDSAFDNPDYWHSRLFPKANAQRT

靶点信息

研究背景	This gene encodes a member of the epidermal growth factor receptor (EGFR) family of receptor tyrosine kinases. This membrane-bound protein has a neuregulin binding domain but not an active kinase domain. It therefore can bind this ligand but not convey the signal into the cell through protein phosphorylation. However, it does form heterodimers with other EGF receptor family members which do have kinase activity. Heterodimerization leads to the activation of pathways which lead to cell proliferation or differentiation. Amplification of this gene and/or overexpression of its protein have been reported in numerous cancers, including prostate, bladder, and breast tumors. Alternate transcriptional splice variants encoding different isoforms have been characterized. One isoform lacks the intermembrane region and is secreted outside the cell. This form acts to modulate the activity of the membrane-bound form. Additional splice variants have also been reported, but they have not been thoroughly characterized.
基因ID	2065
基因名	ERBB3
Swiss	P21860
别名	ERBB3;ErbB-3;HER3;LCCS2;MDA-BF-1;c-erbB-3;c-erbB3;erbB3-S;p180-ErbB3;p45-sErbB3;p85-sErbB3

产品验证



Western blot analysis of ErbB3/HER3 expressed in Mouse liver, 293T, MCF7 using ErbB3/HER3 Rabbit p Ab at 1:1000. Secondary antibody: HRP Goat Anti-Rabbit IgG (H+L) at 1:5000. Lysates/proteins: 30ug per lane. Blocking buffer: 5% non-fat dry milk in TBST. Detection: ECL Enhanced Kit. Exposure time: 120s.

实验步骤

访问官网浏览详情: www.ablybio.cn