

KLF6 Rabbit pAb

货号: **AYP20253**

产品信息

反应	Human,Mouse
宿主	Rabbit
克隆性	Polyclonal
预测反应	
应用	WB IHC IF/ICC
推荐浓度	WB: 1:500 - 1:2000 IHC: 1:50 - 1:200 IF/ICC: 1:50 - 1:100
理论分子量	26kDa/30kDa/31kDa
实测分子量	45kDa
形式	Liquid
保存条件	Store at -20°C. Avoid freeze / thaw cycles. Buffer: PBS with 0.02% sodium azide,50% glycerol,pH7.3.
偶联物	Unconjugated
阳性对照	PC-3
细胞定位	Nucleus
纯化	Affinity purification

抗原信息

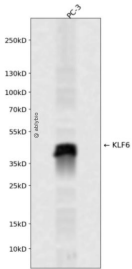
抗原信息	Recombinant fusion protein containing a sequence corresponding to amino acids 40-200 of human KLF6 (NP_001291.3).
序列	ERYLQSEPCYVSASEIKFDSQEDLWTKIILAREKKEESELKISSPPEDTLISPSFCYNLETNSLNSDVSSSESSDSEELSPTAKFTSDPIGEVLVSSGKLSSTVSTPPSSPELSREPSQLWGCVPGELPSPGKVRSGTSGKPGDKNGDASPDGRRRVH

靶点信息

研究背景	This gene encodes a member of the Kruppel-like family of transcription factors. The zinc finger protein is a transcriptional activator, and functions as a tumor suppressor. Multiple transcript variants encoding different isoforms have been found for this gene, some of which are implicated in carcinogenesis.
基因ID	1316

基因名	KLF6
Swiss	Q99612
别名	KLF6;BCD1;CBA1;COPEB;CPBP;GBF;PAC1;ST12;ZF9

产品验证



Western blot analysis of KLF6 expressed in PC-3 using KLF6 Rabbit pAb at 1:1000. Secondary antibody: HRP Goat Anti-Rabbit IgG (H+L) at 1:5000. Lysates/proteins: 30ug per lane. Blocking buffer: 5% non-fat dry milk in TBST. Detection: ECL Enhanced Kit. Exposure time: 120s.

实验步骤

访问官网浏览详情: www.ablybio.cn