

PLXNB1 Rabbit pAb

货号: AYP20252

产品信息

反应	Human,Mouse
宿主	Rabbit
克隆性	Polyclonal
预测反应	
应用	WB
推荐浓度	WB: 1:500 - 1:2000
理论分子量	78kDa/214kDa/232kDa
实测分子量	232kDa
形式	Liquid
保存条件	Store at -20°C. Avoid freeze / thaw cycles. Buffer: PBS with 0.02% sodium azide,50% glycerol,pH7.3.
偶联物	Unconjugated
阳性对照	LO2,Mouse lung
细胞定位	Cell membrane,Secreted,Single-pass type I membrane protein
纯化	Affinity purification

抗原信息

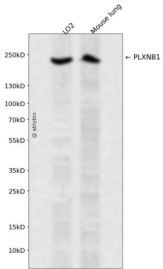
抗原信息	Recombinant fusion protein containing a sequence corresponding to amino acids 250-470 of human PLXNB1 (NP_002664.2).
序列	RVCLRDQHYYSYVELPLACEGGRYGLIQAAAVATSREVAHGVEVLFAAFSSAAPPTVGRPPSAAAGASGASALCAFPLEVD RLANRTRDACYTREGRAEDGTEVAYIEYDVNSDCAQLPVDTLDAYPCGSDHTPSPMASRVPLEATPILEWPGIQLTAVAVT MEDGHTIAFLGDSQQQLHRVYLGPGSDGHPYSTQSIQQGSAVSRDLTFDGTFEHLYVMT

靶点信息

研究背景	Receptor for SEMA4D. Plays a role in GABAergic synapse development (By similarity. Mediates SEMA4A- and SEMA4D-dependent inhibitory synapse development (By similarity. Plays a role in RHOA activation and subsequent changes of the actin cytoskeleton. Plays a role in axon guidance, invasive growth and cell migration.
基因ID	5364

基因名	PLXNB1
Swiss	O43157
别名	PLXNB1;PLEXIN-B1;PLXN5;SEP;plexin-B1

产品验证



Western blot analysis of PLXNB1 expressed in LO2, Mouse lung using PLXNB1 Rabbit pAb at 1:1000. Secondary antibody: HRP Goat Anti-Rabbit IgG (H+L) at 1:5000. Lysates/proteins: 30ug per lane. Blocking buffer: 5% non-fat dry milk in TBST. Detection: ECL Enhanced Kit. Exposure time: 120s.

实验步骤

访问官网浏览详情: www.ablybio.cn