

# EFEMP2 Rabbit pAb

货号: **AYP20249**

## 产品信息

反应	Human
宿主	Rabbit
克隆性	Polyclonal
预测反应	
应用	WB
推荐浓度	<b>WB:</b> 1:500 - 1:1000
理论分子量	49kDa
实测分子量	55kDa
形式	Liquid
保存条件	Store at -20°C. Avoid freeze / thaw cycles. Buffer: PBS with 0.02% sodium azide,50% glycerol,pH7.3.
偶联物	Unconjugated
阳性对照	SH-SY5Y,HT-1080
细胞定位	Secreted
纯化	Affinity purification

## 抗原信息

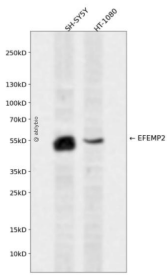
抗原信息	Recombinant fusion protein containing a sequence corresponding to amino acids 26-250 of human EFEMP 2 (NP_058634.4).
序列	SPQDSEEPDSYTECTDGYEWDPSQHCRDVNECLTIPEACKGEMKCNHYGGYLCLPRSAAVINDLHGEGPPPPVPPAQH PNPCPPGYEPDDQDSCVDVDECAQALHDCRPSQDCHNLPGSYQCTCPDGYRKIGPECVDIDECRYRYCQHRCVNLPGSF RCQCEPGFQLGPNRSCVDVNECDMGAPCEQRCFNSYGTFLCRCHQGYELHRDGFSCSDIDECSYS

## 靶点信息

研究背景	A large number of extracellular matrix proteins have been found to contain variations of the epidermal growth factor (EGF) domain and have been implicated in functions as diverse as blood coagulation, activation of complement and determination of cell fate during development. The protein encoded by this gene contains four EGF2 domains and six calcium-binding EGF2 domains. This gene is necessary for elastic fiber formation and connective tissue development. Defects in this gene are cause of an autosomal recessive cutis laxa syndrome. Alternatively spliced transcript variants have been identified for this gene.
------	--

基因ID	30008
基因名	EFEMP2
Swiss	O95967
别名	EFEMP2;ARCL1B;FBLN4;MBP1;UPH1

## 产品验证



Western blot analysis of EFEMP2 expressed in SH-SY5Y, HT-1080 using EFEMP2 Rabbit pAb at 1:1000. Secondary antibody: HRP Goat Anti-Rabbit IgG (H+L) at 1:5000. Lysates/proteins: 30ug per lane. Blocking buffer: 5% non-fat dry milk in TBST. Detection: ECL Enhanced Kit. Exposure time: 120s.

## 实验步骤

访问官网浏览详情: [www.ablybio.cn](http://www.ablybio.cn)