

SUCLA2 Rabbit pAb

货号: **AYP20238**

产品信息

反应	Human,Mouse,Rat
宿主	Rabbit
克隆性	Polyclonal
预测反应	
应用	WB IF/ICC
推荐浓度	WB: 1:500 - 1:2000 IF/ICC: 1:50 - 1:200
理论分子量	48kDa/50kDa
实测分子量	50kDa
形式	Liquid
保存条件	Store at -20°C. Avoid freeze / thaw cycles. Buffer: PBS with 0.02% sodium azide,50% glycerol,pH7.3.
偶联物	Unconjugated
阳性对照	293T,SW480,HeLa,Mouse heart,Mouse liver,Mouse brain,Rat liver
细胞定位	Mitochondrion
纯化	Affinity purification

抗原信息

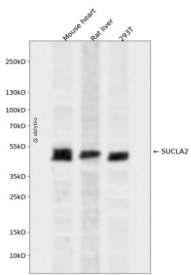
抗原信息	Recombinant fusion protein containing a sequence corresponding to amino acids 1-180 of human SUCLA2 (NP_003841.1).
序列	MAASMFYGRVLVAVATLRNHRPRTAQRAAAQVLGSSGLFNNHGLQVQQQQQRNLSLHEYMSMELLQEAGVSVPKGYYVA KSPDEAYAIKKLGSKDVIKAQVLAGGRGKGTFFESGLKGGVKIVFSPEEAKAVSSQMIGKKLFTKQTGEKGRICNQVLVC ERKYPRREYFAITMERSFQGP

靶点信息

研究背景	Succinyl-CoA synthetase (SCS) is a mitochondrial matrix enzyme that acts as a heterodimer, being composed of an invariant alpha subunit and a substrate-specific beta subunit. The protein encoded by this gene is an ATP-specific SCS beta subunit that dimerizes with the SCS alpha subunit to form SCS-A, an essential component of the tricarboxylic acid cycle. SCS-A hydrolyzes ATP to convert succinate to succinyl-CoA. Defects in this gene are a cause of myopathic mitochondrial DNA depletion syndrome. A pseudogene of this gene has been found on chromosome 6.
------	---

基因ID	8803
基因名	SUCLA2
Swiss	Q9P2R7
别名	SUCLA2;A-BETA;A-SCS;MTDPS5;SCS-betaA

产品验证



Western blot analysis of SUCLA2 expressed in Mouse heart,Rat liver,293T using SUCLA2 Rabbit pAb at 1:1000. Secondary antibody: HRP Goat Anti-Rabbit IgG (H+L) at 1:5000. Lysates/proteins: 30ug per lane. Blocking buffer: 5% non-fat dry milk in TBST. Detection: ECL Enhanced Kit. Exposure time: 120s.

实验步骤

访问官网浏览详情: www.ablybio.cn