

CHRNE Rabbit pAb

货号: **AYP20235**

产品信息

反应	Human,Mouse,Rat
宿主	Rabbit
克隆性	Polyclonal
预测反应	
应用	WB
推荐浓度	WB: 1:1000 - 1:4000
理论分子量	54kDa
实测分子量	45kDa
形式	Liquid
保存条件	Store at -20°C. Avoid freeze / thaw cycles. Buffer: PBS with 0.02% sodium azide,50% glycerol,pH7.3.
偶联物	Unconjugated
阳性对照	HepG2,Mouse skeletal muscle,Rat kidney,Rat skeletal muscle
细胞定位	Cell junction,Cell membrane,Multi-pass membrane protein,postsynaptic cell membrane,synapse
纯化	Affinity purification

抗原信息

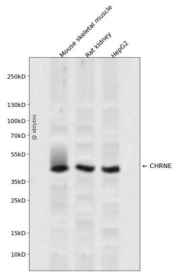
抗原信息	Recombinant fusion protein containing a sequence corresponding to amino acids 21-239 of human CHRNE (NP_000071.1).
序列	KNEELRLYHHLFNNDPGRPVREPEDVTISLKVTLTNLISLNEKEETLTTSVWIGIDWQDYRLNYSKDDFGGIETLRVPSLVWLPEIVLENNIDGQFGVAYDANVLVYEGGSVTWLPPIYRSVCAVEVTYFPFDWQNC SLIFRSQTYNAEEVEFTFAVDN DGKTINKIDIDTEAYTENGEWAIDFCPGVIRRHGGATDGPGETDVIYSLIIRK

靶点信息

研究背景	Acetylcholine receptors at mature mammalian neuromuscular junctions are pentameric protein complexes composed of four subunits in the ratio of two alpha subunits to one beta, one epsilon, and one delta subunit. The acetylcholine receptor changes subunit composition shortly after birth when the epsilon subunit replaces the gamma subunit seen in embryonic receptors. Mutations in the epsilon subunit are associated with congenital myasthenic syndrome.
------	---

基因ID	1145
基因名	CHRNE
Swiss	Q04844
别名	CHRNE;ACHRE;CMS1D;CMS1E;CMS2A;CMS4A;CMS4B;CMS4C;FCCMS;SCCMS

产品验证



Western blot analysis of CHRNE expressed in Mouse skeletal muscle,Rat kidney,HepG2 using CHRNE Rabbit pAb at 1:1000. Secondary antibody: HRP Goat Anti-Rabbit IgG (H+L) at 1:5000. Lysates/proteins: 30ug per lane. Blocking buffer: 5% non-fat dry milk in TBST. Detection: ECL Enhanced Kit. Exposure time: 12 0s.

实验步骤

访问官网浏览详情: www.ablybio.cn