

SLCO2B1 Rabbit pAb

货号: **AYP20224**

产品信息

反应	Human,Mouse
宿主	Rabbit
克隆性	Polyclonal
预测反应	
应用	WB
推荐浓度	WB: 1:500 - 1:2000
理论分子量	52kDa/61kDa/74kDa/76kDa
实测分子量	76kDa
形式	Liquid
保存条件	Store at -20°C. Avoid freeze / thaw cycles. Buffer: PBS with 0.02% sodium azide,50% glycerol,pH7.3.
偶联物	Unconjugated
阳性对照	HepG2,Mouse liver
细胞定位	Cell membrane,Multi-pass membrane protein
纯化	Affinity purification

抗原信息

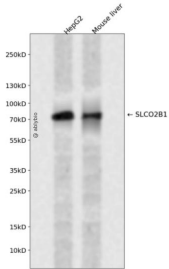
抗原信息	Recombinant fusion protein containing a sequence corresponding to amino acids 130-210 of human SLCO 2B1 (NP_009187.1).
序列	LLMTLPHFISEPYRYDNTSPEDMPQDFKASLCLPTTSAPASAPSNGNCSSYTETQHLSVVGIMFVAQTLGVLGGVPIQPFQ

靶点信息

研究背景	This locus encodes a member of the organic anion-transporting polypeptide family of membrane proteins . The protein encoded by this locus may function in regulation of placental uptake of sulfated steroids. Alternatively spliced transcript variants have been described.
基因ID	11309
基因名	SLCO2B1

Swiss	O94956
别名	SLCO2B1;OATP-B;OATP2B1;OATPB;SLC21A9

产品验证



Western blot analysis of SLCO2B1 expressed in HepG2, Mouse liver using SLCO2B1 Rabbit pAb at 1:1000. Secondary antibody: HRP Goat Anti-Rabbit IgG (H+L) at 1:5000. Lysates/proteins: 30ug per lane. Blocking buffer: 5% non-fat dry milk in TBST. Detection: ECL Enhanced Kit. Exposure time: 120s.

实验步骤

访问官网浏览详情: www.ablybio.cn