

RPRD1B Rabbit pAb

货号: AYP20214

产品信息

反应	Human,Mouse,Rat
宿主	Rabbit
克隆性	Polyclonal
预测反应	
应用	WB IHC
推荐浓度	WB: 1:500 - 1:2000 IHC: 1:100 - 1:200
理论分子量	36kDa
实测分子量	37kDa
形式	Liquid
保存条件	Store at -20°C. Avoid freeze / thaw cycles. Buffer: PBS with 0.02% sodium azide,50% glycerol,pH7.3.
偶联物	Unconjugated
阳性对照	MCF7,SKOV3,NCI-H460,Mouse liver,Mouse lung,Mouse stomach,Mouse spleen,Rat liver
细胞定位	Nucleus
纯化	Affinity purification

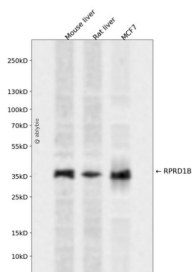
抗原信息

抗原信息	Recombinant fusion protein containing a sequence corresponding to amino acids 80-326 of human rprd1b (Q9NQG5).
序列	EFESVLVDAFVSHVAREADEGCKKPLERLLNIWQERSVYGGFEFIQQLKLSMEDSKSPPPKATEEKKSLKRTFQQIQEEEDDD YPGSYSPQDPSAGPLLTEELIKALQDLENAASGDATVRQKIASLPQEVQDVSLEKITDKEAAERLSKTVDEACLLLAEYNG RLAAELEDRLARMLVEYTQNQKDVLSSEKKEKLEEKYKQKLARVTQVRKELKSHIQSLPDLSELLPNVTGGLAPLPSAGDLFS TD

靶点信息

研究背景	Interacts with phosphorylated C-terminal heptapeptide repeat domain (CTD of the largest RNA polymerase II subunit POLR2A, and participates in dephosphorylation of the CTD by RPAP2. Transcriptional regulator which enhances expression of CCND1. Promotes binding of RNA polymerase II to the CCDN1 promoter and to the termination region before the poly-A site but decreases its binding after the poly-A site. Prevents RNA polymerase II from reading through the 3' end termination site and may allow it to be recruited back to the promoter through promotion of the formation of a chromatin loop. Also enhances the transcription of a number of other cell cycle-related genes including CDK2, CDK4, CDK6 and cyclin-E but not CDKN1A, CDKN1B or cyclin-A. Promotes cell proliferation.
基因ID	58490
基因名	RPRD1B
Swiss	Q9NQG5
别名	RPRD1B;C20orf77;CREPT;NET60;dj1057B20.2;K-H;Kub5-Hera;rprd1b

产品验证



Western blot analysis of RPRD1B expressed in Mouse liver, Rat liver, MCF7 using RPRD1B Rabbit pAb at 1:1000. Secondary antibody: HRP Goat Anti-Rabbit IgG (H+L) at 1:5000. Lysates/proteins: 30ug per lane. Blocking buffer: 5% non-fat dry milk in TBST. Detection: ECL Enhanced Kit. Exposure time: 120s.

实验步骤

访问官网浏览详情: www.ablybio.cn