

ART1 Rabbit pAb

货号: **AYP20211**

产品信息

反应	Human,Mouse
宿主	Rabbit
克隆性	Polyclonal
预测反应	
应用	WB IHC IF/ICC
推荐浓度	WB: 1:500 - 1:2000 IHC: 1:50 - 1:200 IF/ICC: 1:50 - 1:200
理论分子量	36kDa
实测分子量	36kDa
形式	Liquid
保存条件	Store at -20°C. Avoid freeze / thaw cycles. Buffer: PBS with 0.02% sodium azide,50% glycerol,pH7.3.
偶联物	Unconjugated
阳性对照	MCF7,B cells,HepG2
细胞定位	GPI-anchor,Lipid-anchor,Sarcoplasmic reticulum membrane
纯化	Affinity purification

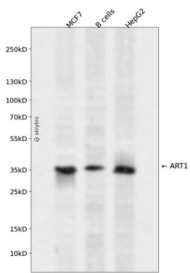
抗原信息

抗原信息	Recombinant fusion protein containing a sequence corresponding to amino acids 23-295 of human ART1 (NP_004305.2).
序列	QSHPI TRRD LFSQEIQ LDMALAS FDDQYAGCAA MTAALPDLNHTEFQANQVYADSWTLASSQWQERQARWPEWSLS PTRSP PPLGFRDEHGVALLAYTANSPLHKEFNAAVREAGRSRAHYLHHFSFKTLHFLLTEALQLLGSGQRPPRCHQVFRG VHGLRFRPAGPRATVRLGGFASASLKHVAAQQFGEDTFFGIWTC LGAPIKGY SFFPGEEEVLI PPFETFQVINASRLA QGPA RIYLRALGKHSTYNCEYIKDKKCKSGPCHLDNS

靶点信息

研究背景	ADP-ribosyltransferase catalyzes the ADP-ribosylation of arginine residues in proteins. Mono-ADP-ribosylation is a posttranslational modification of proteins that is interfered with by a variety of bacterial toxins including cholera, pertussis, and heat-labile enterotoxins of E. coli. The amino acid sequence consists of predominantly hydrophobic N- and C-terminal regions, which is characteristic of glycosylphosphatidylinositol (GPI)-anchored proteins. This gene was previously designated ART2.
基因ID	417
基因名	ART1
Swiss	P52961
别名	ART1;ART2;ARTC1;CD296;RT6

产品验证



Western blot analysis of ART1 expressed in MCF7, B cells, HepG2 using ART1 Rabbit pAb at 1:1000. Secondary antibody: HRP Goat Anti-Rabbit IgG (H+L) at 1:5000. Lysates/proteins: 30ug per lane. Blocking buffer: 5% non-fat dry milk in TBST. Detection: ECL Enhanced Kit. Exposure time: 120s.

实验步骤

访问官网浏览详情: www.ablybio.cn