

KRT3 Rabbit pAb

货号: AYP20205

产品信息

反应	Human,Mouse
宿主	Rabbit
克隆性	Polyclonal
预测反应	
应用	WB IF/ICC
推荐浓度	WB: 1:500 - 1:2000 IF/ICC: 1:50 - 1:200
理论分子量	64kDa
实测分子量	65kDa
形式	Liquid
保存条件	Store at -20°C. Avoid freeze / thaw cycles. Buffer: PBS with 0.02% sodium azide,50% glycerol,pH7.3.
偶联物	Unconjugated
阳性对照	NCI-H460
细胞定位	cytosol,extracellular exosome
纯化	Affinity purification

抗原信息

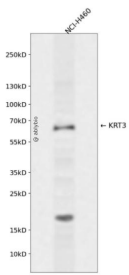
抗原信息	Recombinant fusion protein containing a sequence corresponding to amino acids 230-390 of human KRT3 (NP_476429.2).
序列	WNLLQQQGTSSISGTNNLEPLFENHINYLRSYLDNILGERGRLDSELKNMEDLVEDFKKKYEDEINKRTAAENEFVTLKKDVSAYMNVKVELQAKVDALIDEIDFLRTLTYDAELSQMQSHISDTSVVLSDMDNNSLDLDSIIAEVRAQYEDIAQRSKAEAE

靶点信息

研究背景	The protein encoded by this gene is a member of the keratin gene family. The type II cytokeratins consist of basic or neutral proteins which are arranged in pairs of heterotypic keratin chains coexpressed during differentiation of simple and stratified epithelial tissues. This type II cytokeratin is specifically expressed in the corneal epithelium with family member KRT12 and mutations in these genes have been associated with Meesmann's Corneal Dystrophy. The type II cytokeratins are clustered in a region of chromosome 12 q12-q13.
------	--

基因ID	3850
基因名	KRT3
Swiss	P12035
别名	KRT3;CK3;K3;keratin 3

产品验证



Western blot analysis of KRT3 expressed in NCI-H460 using KRT3 Rabbit pAb at 1:1000. Secondary antibody: HRP Goat Anti-Rabbit IgG (H+L) at 1:5000. Lysates/proteins: 30ug per lane. Blocking buffer: 5% non-fat dry milk in TBST. Detection: ECL Enhanced Kit. Exposure time: 120s.

实验步骤

访问官网浏览详情: www.ablybio.cn