

KIR3DL2 Rabbit pAb

货号: **AYP20204**

产品信息

反应	Human,Mouse,Rat
宿主	Rabbit
克隆性	Polyclonal
预测反应	
应用	WB
推荐浓度	WB: 1:500 - 1:2000
理论分子量	48kDa/50kDa
实测分子量	50kDa
形式	Liquid
保存条件	Store at -20°C. Avoid freeze / thaw cycles. Buffer: PBS with 0.02% sodium azide,50% glycerol,pH7.3.
偶联物	Unconjugated
阳性对照	HL-60,LO2,MCF7,Mouse spleen,Mouse liver,Rat spleen
细胞定位	Cell membrane,Single-pass type I membrane protein
纯化	Affinity purification

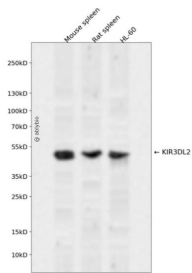
抗原信息

抗原信息	Recombinant fusion protein containing a sequence corresponding to amino acids 22-340 of human KIR3DL2 (NP_006728.2).
序列	LMGGQDKPFLSARPSTVVPRGGHVALQCHYRRGFNNFMYLKEDRSHVPIFHGRIFQESFIMGPVTPAHAGTYRCRGSRPH SLTGWSAPSNPLVIMVTGNHRKPSLLAHPGPLLKSGETVILQCWSDVMFEHFFLHREGISEDPSRLVGQIHDGVSKANFSI GPLMPVLAGTYRCYGSVPHSPYQLSAPSDPLDIVITGLYEKPSLSAQPGPTVQAGENVTLSCSSWSSYDIYHLSREGEAHE RRLRAVPKVNRTFQADFPLGPATHGGTYRCFGSFRALPCVWSNSSDPLLVSVTGNPSSSWPSPTEPSSKSGICRHLH

靶点信息

研究背景	Killer cell immunoglobulin-like receptors (KIRs) are transmembrane glycoproteins expressed by natural killer cells and subsets of T cells. The KIR genes are polymorphic and highly homologous and they are found in a cluster on chromosome 19q13.4 within the 1 Mb leukocyte receptor complex (LRC). The gene content of the KIR gene cluster varies among haplotypes, although several 'framework' genes are found in all haplotypes (KIR3DL3, KIR3DP1, KIR3DL4, KIR3DL2). The KIR proteins are classified by the number of extracellular immunoglobulin domains (2D or 3D) and by whether they have a long (L) or short (S) cytoplasmic domain. KIR proteins with the long cytoplasmic domain transduce inhibitory signals upon ligand binding via an immune tyrosine-based inhibitory motif (ITIM), while KIR proteins with the short cytoplasmic domain lack the ITIM motif and instead associate with the TYRO protein tyrosine kinase binding protein to transduce activating signals. The ligands for several KIR proteins are subsets of HLA class I molecules; thus, KIR proteins are thought to play an important role in regulation of the immune response. This gene is one of the 'framework' loci that is present on all haplotypes. Alternatively spliced transcript variants encoding multiple isoforms have been observed for this gene.
基因ID	3812
基因名	KIR3DL2
Swiss	P43630
别名	KIR3DL2;3DL2;CD158K;KIR-3DL2;NKAT-4;NKAT4;NKAT4B;p140

产品验证



Western blot analysis of KIR3DL2 expressed in Mouse spleen, Rat spleen, HL-60 using KIR3DL2 Rabbit p Ab at 1:1000. Secondary antibody: HRP Goat Anti-Rabbit IgG (H+L) at 1:5000. Lysates/proteins: 30ug per lane. Blocking buffer: 5% non-fat dry milk in TBST. Detection: ECL Enhanced Kit. Exposure time: 120 S.

实验步骤

访问官网浏览详情: www.ablybio.cn