

INPPL1 Rabbit pAb

货号: **AYP20203**

产品信息

反应	Human,Mouse,Rat
宿主	Rabbit
克隆性	Polyclonal
预测反应	
应用	WB
推荐浓度	WB: 1:500 - 1:2000
理论分子量	113kDa/138kDa
实测分子量	160kDa
形式	Liquid
保存条件	Store at -20°C. Avoid freeze / thaw cycles. Buffer: PBS with 0.02% sodium azide,50% glycerol,pH7.3.
偶联物	Unconjugated
阳性对照	HeLa,U-251MG,A-549,BT-474,Mouse heart,Mouse brain,Rat brain
细胞定位	Cell projection,Cytoplasm,Membrane,Peripheral membrane protein,cytoskeleton,cytosol,filopodium,lamellipodium
纯化	Affinity purification

抗原信息

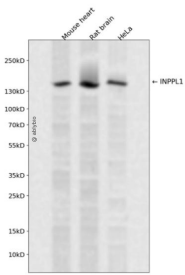
抗原信息	Recombinant fusion protein containing a sequence corresponding to amino acids 100-310 of human INPPL1 (NP_001558.3).
序列	GLY AQP NQGLV CALLLPVEGEREPDPPDDR DASDGEDEK PPLPPRSGSTSI SAP TGPSSPLPAPETPTAPAAESAPNGLSTVSHDY LKGSYGLDLEAVRGGASHLPHLTRLATSCRRLHSEVDKVL SGLEILSKVFDQQSSPMVTRLLQQQLPQTGEQEL ESLVLKLSVLKDFLSGIQKKALKALQDMSSTAPPAPQPSTRKAKTIPVQ

靶点信息

研究背景	The protein encoded by this gene is an SH2-containing 5'-inositol phosphatase that is involved in the regulation of insulin function. The encoded protein also plays a role in the regulation of epidermal growth factor receptor turnover and actin remodelling. Additionally, this gene supports metastatic growth in breast cancer and is a valuable biomarker for breast cancer.
------	--

基因ID	3636
基因名	INPPL1
Swiss	O15357
别名	INPPL1;OPSMD;SHIP2

产品验证



Western blot analysis of INPPL1 expressed in Mouse heart,Rat brain,HeLa using INPPL1 Rabbit pAb at 1:1000. Secondary antibody: HRP Goat Anti-Rabbit IgG (H+L) at 1:5000. Lysates/proteins: 30ug per lane. Blocking buffer: 5% non-fat dry milk in TBST. Detection: ECL Enhanced Kit. Exposure time: 120s.

实验步骤

访问官网浏览详情: www.ablybio.cn