

# AP1M1 Rabbit pAb

货号: **AYP20197**

## 产品信息

反应	Human,Mouse,Rat
宿主	Rabbit
克隆性	Polyclonal
预测反应	
应用	WB
推荐浓度	<b>WB:</b> 1:500 - 1:1000
理论分子量	48kDa/49kDa
实测分子量	49KDa
形式	Liquid
保存条件	Store at -20°C. Avoid freeze / thaw cycles. Buffer: PBS with 0.05% proclin300,50% glycerol,pH7.3.
偶联物	Unconjugated
阳性对照	PC-3,Jurkat,K-562,Mouse testis,Mouse thymus,Mouse liver,Rat testis,Rat thymus,Rat liver
细胞定位	Cytoplasmic side,Cytoplasmic vesicle,Golgi apparatus,Peripheral membrane protein,clathrin-coated vesicle membrane
纯化	Affinity purification

## 抗原信息

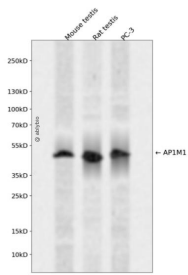
抗原信息	Recombinant fusion protein containing a sequence corresponding to amino acids 1-160 of human AP1M1 (NP_115882.1).
序列	MSASAVYVLDLKGKVLICRNYRGDVMSEVEHFMPILMEKEEEGMLSPILAHGGVRFMWIKHNNLYLVATSKKNACVSLVFSFLYKVVQVFSEYFKELEEEESIRDNFVIIYELLDLMDFGYPQTDSKILQEYITQEGHKLETGAPRPPATVTNAVSWR

## 靶点信息

研究背景	The protein encoded by this gene is the medium chain of the trans-Golgi network clathrin-associated protein complex AP-1. The other components of this complex are beta-prime-adaptin, gamma-adaptin, and the small chain AP1S1. This complex is located at the Golgi vesicle and links clathrin to receptors in coated vesicles. These vesicles are involved in endocytosis and Golgi processing. Alternatively spliced transcript variants encoding distinct protein isoforms have been found for this gene.
------	--

基因ID	8907
基因名	AP1M1
Swiss	Q9BXS5
别名	AP1M1;AP47;CLAPM2;CLTNM;MU-1A

## 产品验证



Western blot analysis of AP1M1 expressed in Mouse testis, Rat testis, PC-3 using AP1M1 Rabbit pAb at 1:1000. Secondary antibody: HRP Goat Anti-Rabbit IgG (H+L) at 1:5000. Lysates/proteins: 30ug per lane. Blocking buffer: 5% non-fat dry milk in TBST. Detection: ECL Enhanced Kit. Exposure time: 120s.

## 实验步骤

访问官网浏览详情: [www.ablybio.cn](http://www.ablybio.cn)