

ETHE1 Rabbit pAb

货号: **AYP20191**

产品信息

| | |
|-------|--|
| 反应 | Human,Mouse,Rat |
| 宿主 | Rabbit |
| 克隆性 | Polyclonal |
| 预测反应 | |
| 应用 | WB IHC IF/ICC |
| 推荐浓度 | WB: 1:500 - 1:1000 IHC: 1:50 - 1:200 IF/ICC: 1:50 - 1:200 |
| 理论分子量 | 27kDa |
| 实测分子量 | 28KDa |
| 形式 | Liquid |
| 保存条件 | Store at -20°C. Avoid freeze / thaw cycles. Buffer: PBS with 0.01% thiomersal,50% glycerol,pH7.3. |
| 偶联物 | Unconjugated |
| 阳性对照 | HT-29,HepG2,Mouse large intestine,Mouse liver,Rat liver |
| 细胞定位 | Cytoplasm,Mitochondrion matrix,Nucleus |
| 纯化 | Affinity purification |

抗原信息

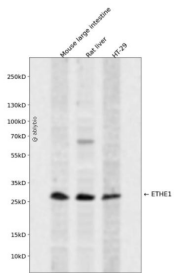
| | |
|------|--|
| 抗原信息 | Recombinant fusion protein containing a sequence corresponding to amino acids 8-245 of human ETHE1 (NP_055112.2). |
| 序列 | VARRQLSQRGGSGAPILLRQMFEVPSCTFTYLLGDRESREAVLIDPVLETAPRDAQLIKELGLRLLYAVNTHCHADHITGSG LLRSLLPGCQSVISRLSGAQADLHIEDGDSIRFGRFALETRASPGHTPGCVTFVLNDHSMFTGDALLIRGCGRTDFQGGC AKTLYHSVHEKIFTLPGDCLIYPAHDYHGFTVSTVEEERTLNPRLTLSCEEFVKIMGNLNLPKQQIDFAVPANM |

靶点信息

| | |
|------|--|
| 研究背景 | This gene encodes a member of the metallo beta-lactamase family of iron-containing proteins involved in the mitochondrial sulfide oxidation pathway. The encoded protein catalyzes the oxidation of a persulfide substrate to sulfite. Certain mutations in this gene cause ethylmalonic encephalopathy, an infantile metabolic disorder affecting the brain, gastrointestinal tract and peripheral vessels. Alternative splicing results in multiple transcript variants encoding different isoforms. |
|------|--|

| | |
|-------|--------------------|
| 基因ID | 23474 |
| 基因名 | ETHE1 |
| Swiss | O95571 |
| 别名 | ETHE1;HSCO;YF13H12 |

产品验证



Western blot analysis of ETHE1 expressed in Mouse large intestine,Rat liver,HT-29 using ETHE1 Rabbit p Ab at 1:1000. Secondary antibody: HRP Goat Anti-Rabbit IgG (H+L) at 1:5000. Lysates/proteins: 30ug per lane. Blocking buffer: 5% non-fat dry milk in TBST. Detection: ECL Enhanced Kit. Exposure time: 120s.

实验步骤

访问官网浏览详情: www.ablybio.cn