

CECR2 Rabbit pAb

货号: **AYP20190**

产品信息

反应	Mouse,Rat
宿主	Rabbit
克隆性	Polyclonal
预测反应	
应用	WB
推荐浓度	WB: 1:200 - 1:1000
理论分子量	58kDa/162kDa/164kDa
实测分子量	164kDa
形式	Liquid
保存条件	Store at -20°C. Avoid freeze / thaw cycles. Buffer: PBS with 0.02% sodium azide,50% glycerol,pH7.3.
偶联物	Unconjugated
阳性对照	Mouse liver,Rat liver
细胞定位	nucleus
纯化	Affinity purification

抗原信息

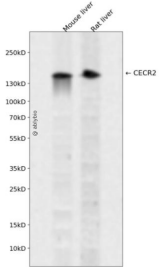
抗原信息	Recombinant fusion protein containing a sequence corresponding to amino acids 170-370 of human CECR2 (NP_113601.2).
序列	VQGKSNGELSLSRESEGQKNVSSIPGKTGKRRGRPPKRKLLQEILLSEKQEENSLASEPQTRHGSQGPGQGTWWLLCQ TEEEWRQVTESFRERTSLRERQLYKLLSEDFLPEICNMIAQKGKRPQRTKAELHPRWMSDHLSEIKPVKQEETPVLTRIEKQK RKEEEEERQILLAVQKKEQEQLKEERKRELEEKVKAVER

靶点信息

研究背景	This gene encodes a bromodomain-containing protein that is involved in chromatin remodeling, and may additionally play a role in DNA damage response. The encoded protein functions as part of an ATP-dependent complex that is involved in neurulation. This gene is a candidate gene for Cat Eye Syndrome. Alternative splicing results in multiple transcript variants.
基因ID	27443

基因名	CECR2
Swiss	Q9BXF3
别名	CECR2

产品验证



Western blot analysis of CECR2 expressed in Mouse liver,Rat liver using CECR2 Rabbit pAb at 1:1000. Secondary antibody: HRP Goat Anti-Rabbit IgG (H+L) at 1:5000. Lysates/proteins: 30ug per lane. Blocking buffer: 5% non-fat dry milk in TBST. Detection: ECL Enhanced Kit. Exposure time: 120s.

实验步骤

访问官网浏览详情: www.ablybio.cn