

MESP1 Rabbit pAb

货号: **AYP20187**

产品信息

反应	Human,Mouse,Rat
宿主	Rabbit
克隆性	Polyclonal
预测反应	
应用	WB
推荐浓度	WB: 1:200 - 1:1000
理论分子量	28kDa
实测分子量	20kDa
形式	Liquid
保存条件	Store at -20°C. Avoid freeze / thaw cycles. Buffer: PBS with 0.02% sodium azide,50% glycerol,pH7.3.
偶联物	Unconjugated
阳性对照	A-549,HeLa,THP-1,Mouse heart,Rat heart
细胞定位	Nucleus
纯化	Affinity purification

抗原信息

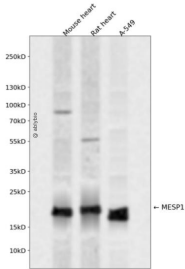
抗原信息	Recombinant fusion protein containing a sequence corresponding to amino acids 149-268 of human MESP1 (NP_061140.1).
序列	RRCRQRGDAGSPRGCLPCDDCPAQMQTRTQAEGQGQGRGLGLVSAVRAGASWGSPPACPGARAAPEPRDPPALFAE AACPEGQAMEPSPSPLLPGDVLALLETWMPLSPLEWLPEEPK

靶点信息

研究背景	Transcription factor. Plays a role in the epithelialization of somitic mesoderm and in the development of cardiac mesoderm. Defines the rostrocaudal patterning of the somites by participating in distinct Notch pathways (By similarity).
基因ID	55897

基因名	MESP1
Swiss	Q9BRJ9
别名	MESP1;bHLHc5

产品验证



Western blot analysis of MESP1 expressed in Mouse heart,Rat heart,A-549 using MESP1 Rabbit pAb at 1:1000. Secondary antibody: HRP Goat Anti-Rabbit IgG (H+L) at 1:5000. Lysates/proteins: 30ug per lane . Blocking buffer: 5% non-fat dry milk in TBST. Detection: ECL Enhanced Kit. Exposure time: 120s.

实验步骤

访问官网浏览详情: www.ablybio.cn