

# C6orf25 Rabbit pAb

货号: **AYP20183**

## 产品信息

反应	Human,Mouse,Rat
宿主	Rabbit
克隆性	Polyclonal
预测反应	
应用	WB
推荐浓度	<b>WB:</b> 1:200 - 1:1000
理论分子量	20kDa/21kDa/23kDa/24kDa/25kDa/26kDa
实测分子量	26kDa
形式	Liquid
保存条件	Store at -20°C. Avoid freeze / thaw cycles. Buffer: PBS with 0.02% sodium azide,50% glycerol,pH7.3.
偶联物	Unconjugated
阳性对照	K-562,Jurkat,SW620,Mouse small intestine,Mouse pancreas,Rat pancreas
细胞定位	Cell membrane,Endoplasmic reticulum,Golgi apparatus,Golgi apparatus,Single-pass type I membrane protein
纯化	Affinity purification

## 抗原信息

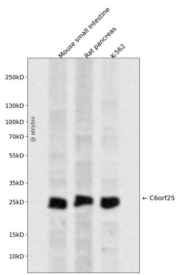
抗原信息	Recombinant fusion protein containing a sequence corresponding to amino acids 18-142 of human C6orf25 (NP_612121.1).
序列	NPGASLDGRPGDRVNLSCGGVSHPIRWVWAPSFACKGLSKGRRPILWASSSGTPTVPPLQPFVGRRLSLDSGIRRELLLSAGDSGTFCKGRHEDESRTVLHVLGDRTYCKAPGPTHGSVYPQ

## 靶点信息

研究背景	This gene is a member of the immunoglobulin (Ig) superfamily and is located in the major histocompatibility complex (MHC) class III region. The protein encoded by this gene is a glycosylated, plasma membrane-bound cell surface receptor, but soluble isoforms encoded by some transcript variants have been found in the endoplasmic reticulum and Golgi before being secreted. Multiple transcript variants encoding different isoforms have been found for this gene.
------	-----------------------------------------------------------------------------------------------------------------------------------------------------------------------------------------------------------------------------------------------------------------------------------------------------------------------------------------------------------------------------------------------------------------------------------------------------------------------------

基因ID	80739
基因名	MPIG6B
Swiss	O95866
别名	MPIG6B;C6orf25;G6b;G6b-B;NG31;THAMY

## 产品验证



Western blot analysis of C6orf25 expressed in Mouse small intestine, Rat pancreas, K-562 using C6orf25 Rabbit pAb at 1:1000. Secondary antibody: HRP Goat Anti-Rabbit IgG (H+L) at 1:5000. Lysates/proteins: 30ug per lane. Blocking buffer: 5% non-fat dry milk in TBST. Detection: ECL Enhanced Kit. Exposure time : 120s.

## 实验步骤

访问官网浏览详情: [www.ablybio.cn](http://www.ablybio.cn)