

GRHL2 Rabbit pAb

货号: **AYP20182**

产品信息

反应	Human,Rat
宿主	Rabbit
克隆性	Polyclonal
预测反应	
应用	WB
推荐浓度	WB: 1:500 - 1:1000
理论分子量	69kDa/71kDa
实测分子量	71kDa
形式	Liquid
保存条件	Store at -20°C. Avoid freeze / thaw cycles. Buffer: PBS with 0.02% sodium azide,50% glycerol,pH7.3.
偶联物	Unconjugated
阳性对照	293T,MCF7,Rat lung
细胞定位	Membrane,Nucleus
纯化	Affinity purification

抗原信息

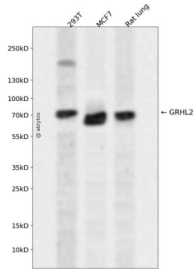
抗原信息	Recombinant fusion protein containing a sequence corresponding to amino acids 80-250 of human GRHL2 (NP_079191.2).
序列	LSVSKASDSQEDQEKRNCLGTSEAQSNLSGGENRVQLKTVPNVLSLNQDHLNENSKREQYSISFPESAIIPVSGITVVKA EDFTPVFMAPPVHYPRGDGEEQRVWIFEQTQYDVPVSLATHSAYLKDDQRSTPDSTYSESFKDAATEKFRSASVGAEEYMY DQTSSGTFQY

靶点信息

研究背景	The protein encoded by this gene is a transcription factor that can act as a homodimer or as a heterodimer with either GRHL1 or GRHL3. Defects in this gene are a cause of non-syndromic sensorineural deafness autosomal dominant type 28 (DFNA28).
基因ID	79977

基因名	GRHL2
Swiss	Q6ISB3
别名	GRHL2;BOM;DFNA28;ECTDS;TFCP2L3

产品验证



Western blot analysis of GRHL2 expressed in 293T, MCF7, Rat lung using GRHL2 Rabbit pAb at 1:1000. Secondary antibody: HRP Goat Anti-Rabbit IgG (H+L) at 1:5000. Lysates/proteins: 30ug per lane. Blocking buffer: 5% non-fat dry milk in TBST. Detection: ECL Enhanced Kit. Exposure time: 120s.

实验步骤

访问官网浏览详情: www.ablybio.cn