

CRLF2 Rabbit pAb

货号: **AYP20181**

产品信息

反应	Human,Mouse,Rat
宿主	Rabbit
克隆性	Polyclonal
预测反应	
应用	WB
推荐浓度	WB: 1:200 - 1:1000
理论分子量	26kDa/29kDa/42kDa
实测分子量	50kDa
形式	Liquid
保存条件	Store at -20°C. Avoid freeze / thaw cycles. Buffer: PBS with 0.02% sodium azide,50% glycerol,pH7.3.
偶联物	Unconjugated
阳性对照	293T,Jurkat,Mouse liver,Rat brain
细胞定位	Cell membrane,Secreted,Single-pass type I membrane protein
纯化	Affinity purification

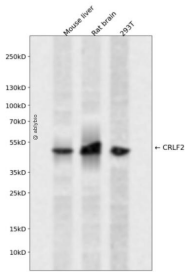
抗原信息

抗原信息	Recombinant fusion protein containing a sequence corresponding to amino acids 23-231 of human CRLF2 (NP_071431.2).
序列	QGGAAEGVQIQIIFYFNLETVQVTWNASKYSRTNLTFFHYRFNGDEAYDQCTNYLLQEGHTSGCLLDAEQRDDILYFSIRNGT HPVFTASRWMVYYLKPSSPKHVRFSWHQDAVTVTCSDLSDLLYEVQYRSPFDTEWQSKQENTCNVTIEGLDAEKCY FWVRVKAMEDVYGPDTYPSDWSEVTCWQRGEIRDACAETPTPPKPKLSK

靶点信息

研究背景	This gene encodes a member of the type I cytokine receptor family. The encoded protein is a receptor for thymic stromal lymphopoietin (TSLP). Together with the interleukin 7 receptor (IL7R), the encoded protein and TSLP activate STAT3, STAT5, and JAK2 pathways, which control processes such as cell proliferation and development of the hematopoietic system. Rearrangement of this gene with immunoglobulin heavy chain gene (IGH) on chromosome 14, or with P2Y purinoceptor 8 gene (P2RY8) on the same X or Y chromosomes is associated with B-progenitor acute lymphoblastic leukemia (ALL) and Down syndrome ALL. Alternatively spliced transcript variants have been found for this gene.
基因ID	64109
基因名	CRLF2
Swiss	Q9HC73
别名	CRLF2;CRL2;CRLF2Y;TSLPR

产品验证



Western blot analysis of CRLF2 expressed in Mouse liver,Rat brain,293T using CRLF2 Rabbit pAb at 1:1000. Secondary antibody: HRP Goat Anti-Rabbit IgG (H+L) at 1:5000. Lysates/proteins: 30ug per lane. Blocking buffer: 5% non-fat dry milk in TBST. Detection: ECL Enhanced Kit. Exposure time: 120s.

实验步骤

访问官网浏览详情: www.ablybio.cn