

C6 Rabbit pAb

货号: **AYP20176**

产品信息

反应	Mouse
宿主	Rabbit
克隆性	Polyclonal
预测反应	
应用	WB
推荐浓度	WB: 1:500 - 1:2000
理论分子量	104kDa
实测分子量	110kDa
形式	Liquid
保存条件	Store at -20°C. Avoid freeze / thaw cycles. Buffer: PBS with 0.02% sodium azide, 50% glycerol, pH7.3.
偶联物	Unconjugated
阳性对照	Mouse liver, Mouse lung
细胞定位	Secreted
纯化	Affinity purification

抗原信息

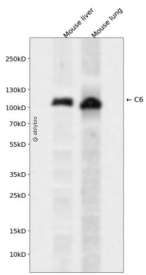
抗原信息	Recombinant fusion protein containing a sequence corresponding to amino acids 22-260 of human C6 (NP_000056.2).
序列	CFCDHYAWTQWTSCKTCNSGTQSRHRQIVVDKYYQENFCEQICKSQETRECNWQRCPINCLLGDFGPWSDCDPCIEKQSKVRSVLRPSQFGGQPCTAPLVAFAQPCIPSKLCKIEEADCKNKFRCDSGRCIARKLECNGENDCGNSDERDCGRKAVCTRKYNPIPSVQLMGNGFHFLAGEPRGEVLDNSFTGGICKTVKSSRTSNPYRVANLENVGFVQTAEDDLKTDYKDLT S

靶点信息

研究背景	This gene encodes a component of the complement cascade. The encoded protein is part of the membrane attack complex that can be incorporated into the cell membrane and cause cell lysis. Mutations in this gene are associated with complement component-6 deficiency. Transcript variants encoding the same protein have been described.
------	--

基因ID	729
基因名	C6
Swiss	P13671
别名	C6

产品验证



Western blot analysis of C6 expressed in Mouse liver, Mouse lung using C6 Rabbit pAb at 1:1000. Secondary antibody: HRP Goat Anti-Rabbit IgG (H+L) at 1:5000. Lysates/proteins: 30ug per lane. Blocking buffer: 5 % non-fat dry milk in TBST. Detection: ECL Enhanced Kit. Exposure time: 120s.

实验步骤

访问官网浏览详情: www.ablybio.cn