

DIAPH2 Rabbit pAb

货号: **AYP20167**

产品信息

反应	Human,Mouse,Rat
宿主	Rabbit
克隆性	Polyclonal
预测反应	
应用	WB
推荐浓度	WB: 1:1000 - 1:2000
理论分子量	124kDa/125kDa
实测分子量	125kDa
形式	Liquid
保存条件	Store at -20°C. Avoid freeze / thaw cycles. Buffer: PBS with 0.02% sodium azide,50% glycerol,pH7.3.
偶联物	Unconjugated
阳性对照	SKOV3,SW620,NCI-H460,LO2,293T,Mouse liver,Mouse kidney,Rat liver
细胞定位	Cytoplasm,Early endosome,cytosol
纯化	Affinity purification

抗原信息

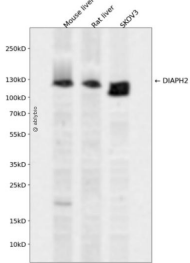
抗原信息	Recombinant fusion protein containing a sequence corresponding to amino acids 1-120 of human DIAPH2 (NP_009293.1).
序列	MEQPGAAASGAGGGSEEPGGGRSNKRSAGNRAANEETKNPKLNIQIKTLADDVRDRITSFRKSTVKKEKPLIQHPIDS QVAMSEFPAAQPLYDERSLNLSEKEVLDLFEKMMEDMNLN

靶点信息

研究背景	The product of this gene belongs to the diaphanous subfamily of the formin homology family of proteins. This gene may play a role in the development and normal function of the ovaries. Defects in this gene have been linked to premature ovarian failure 2. Alternatively spliced transcript variants encoding different isoforms have been identified.
基因ID	1730

基因名	DIAPH2
Swiss	O60879
别名	DIAPH2;DIA;DIA2;DRF2;POF;POF2;POF2A

产品验证



Western blot analysis of DIAPH2 expressed in Mouse liver,Rat liver,SKOV3 using DIAPH2 Rabbit pAb at 1:1000. Secondary antibody: HRP Goat Anti-Rabbit IgG (H+L) at 1:5000. Lysates/proteins: 30ug per lane. Blocking buffer: 5% non-fat dry milk in TBST. Detection: ECL Enhanced Kit. Exposure time: 120s.

实验步骤

访问官网浏览详情: www.ablybio.cn