

DPP6 Rabbit pAb

货号: **AYP20165**

产品信息

| | |
|-------|--|
| 反应 | Human |
| 宿主 | Rabbit |
| 克隆性 | Polyclonal |
| 预测反应 | |
| 应用 | WB |
| 推荐浓度 | WB: 1:1000 - 1:2000 |
| 理论分子量 | 91kDa/97kDa |
| 实测分子量 | 105kDa |
| 形式 | Liquid |
| 保存条件 | Store at -20°C. Avoid freeze / thaw cycles. Buffer: PBS with 0.02% sodium azide, 50% glycerol, pH7.3. |
| 偶联物 | Unconjugated |
| 阳性对照 | 293T |
| 细胞定位 | Cell membrane, Single-pass type II membrane protein |
| 纯化 | Affinity purification |

抗原信息

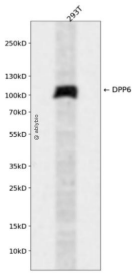
| | |
|------|---|
| 抗原信息 | Recombinant fusion protein containing a sequence corresponding to amino acids 117-210 of human DPP6 (NP_001277182.1). |
| 序列 | LTPAEDNSLSQKKKVTVEDLFSDFKIHDPEAKWISDTEFIYREQGTVRLWNVETNTSTVLIEGKKIESLRAIRYEISPDREYALFSYNVEPM |

靶点信息

| | |
|------|--|
| 研究背景 | This gene encodes a single-pass type II membrane protein that is a member of the peptidase S9B family of serine proteases. This protein has no detectable protease activity, most likely due to the absence of the conserved serine residue normally present in the catalytic domain of serine proteases. However, it does bind specific voltage-gated potassium channels and alters their expression and biophysical properties. Variations in this gene may be associated with susceptibility to amyotrophic lateral sclerosis and with idiopathic ventricular fibrillation. Alternative splicing results in multiple transcript variants. |
|------|--|

| | |
|-------|--------------------------|
| 基因ID | 1804 |
| 基因名 | DPP6 |
| Swiss | P42658 |
| 别名 | DPP6;DPL1;DPPX;MRD33;VF2 |

产品验证



Western blot analysis of DPP6 expressed in 293T using DPP6 Rabbit pAb at 1:1000. Secondary antibody: HRP Goat Anti-Rabbit IgG (H+L) at 1:5000. Lysates/proteins: 30ug per lane. Blocking buffer: 5% non-fat dry milk in TBST. Detection: ECL Enhanced Kit. Exposure time: 120s.

实验步骤

访问官网浏览详情: www.ablybio.cn